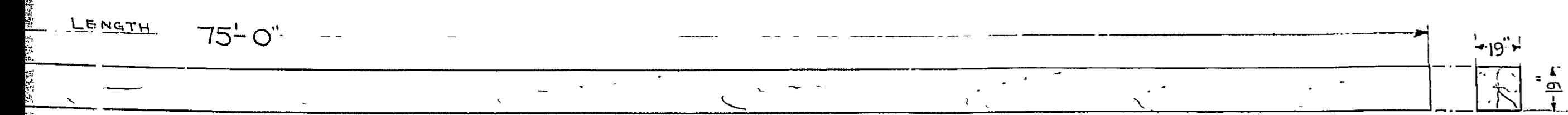
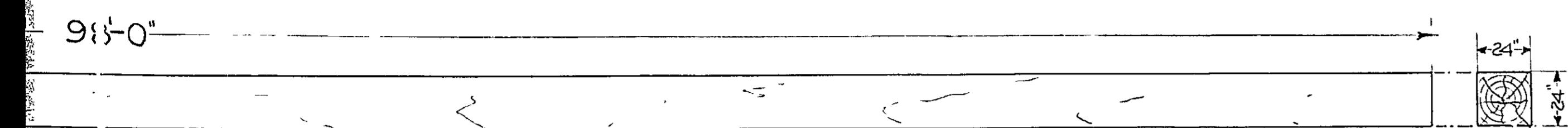


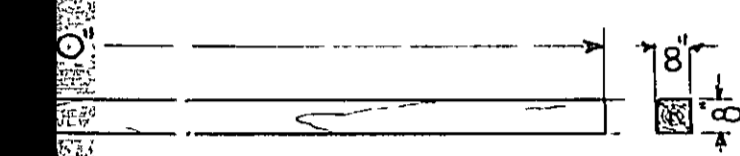
IN CHARGE OF WORK: JOHN A. LORD, LIEUT. (C.) U.S.N.
DRAWN BY: M. CUNHA
TRACED BY: "



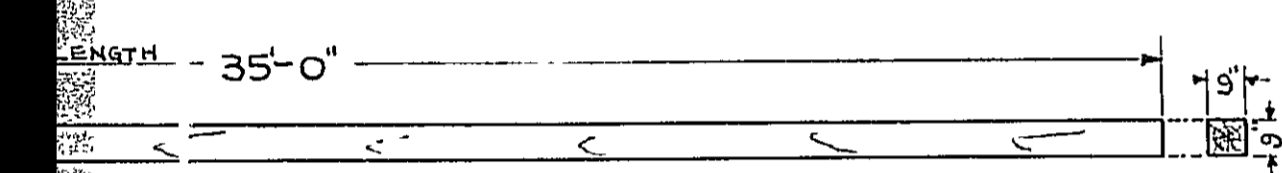
MAIN TOPSAIL YARD
SCALE: 1/4"=1ft.
MATERIAL OREGON PINE OR DOUGLAS FIR.
MATERIAL SQUARE OR 8 SQUARED.
HEART TO BE IN CENTER OF TIMBER.
APPROX. 100 PER CENT BOXED.
1 THUS



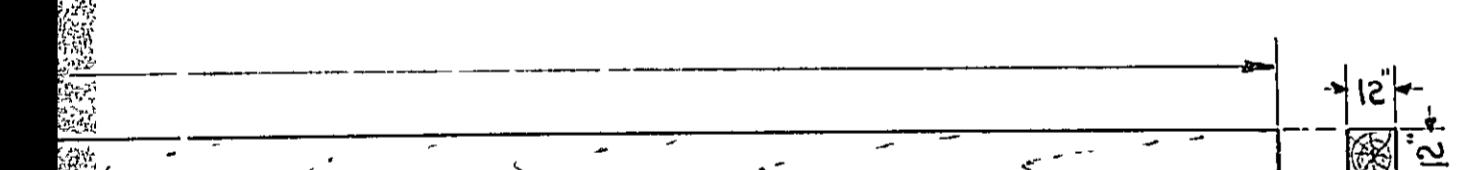
MAIN YARD
SCALE: 1/4"=1ft.
MATERIAL OREGON PINE OR DOUGLAS FIR.
MATERIAL SQUARE OR 8 SQUARED.
HEART TO BE IN CENTER OF TIMBER.
APPROX. 100 PER CENT BOXED.
1 THUS



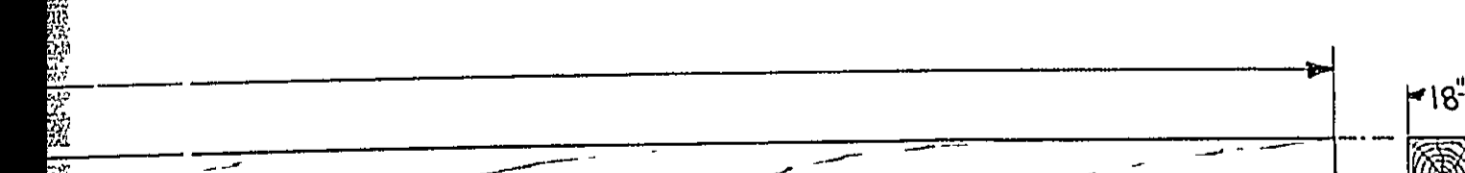
ROYAL YARD
SCALE: 1/4"=1ft.
MATERIAL OREGON PINE OR DOUGLAS FIR.
MATERIAL SQUARE OR 8 SQUARED.
HEART TO BE IN CENTER OF TIMBER.
APPROX. 100 PER CENT BOXED.
1 THUS



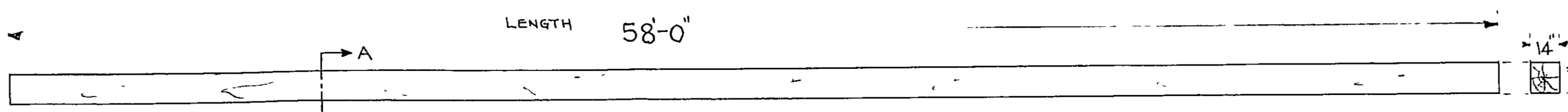
TOPGALLANT YARD
SCALE: 1/4"=1ft.
MATERIAL OREGON PINE OR DOUGLAS FIR.
MATERIAL SQUARE OR 8 SQUARED.
HEART TO BE IN CENTER OF TIMBER.
APPROX. 100 PER CENT BOXED.
1 THUS



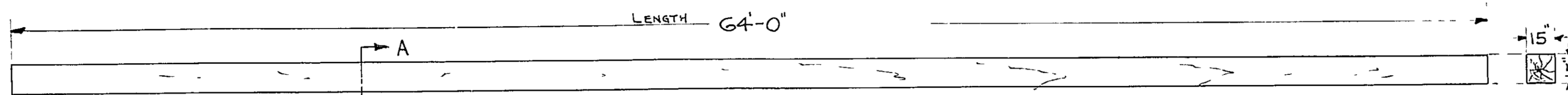
TOPSAIL YARD
SCALE: 1/4"=1ft.
MATERIAL OREGON PINE OR DOUGLAS FIR.
MATERIAL SQUARE OR 8 SQUARED.
HEART TO BE IN CENTER OF TIMBER.
APPROX. 100 PER CENT BOXED.
1 THUS



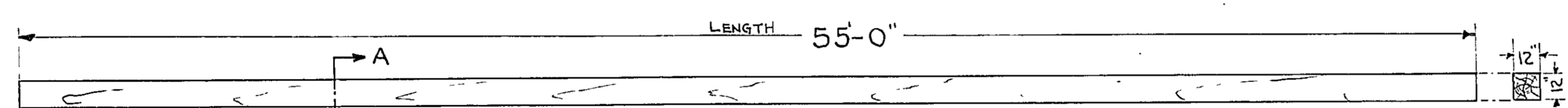
BACK YARD
MATERIAL OREGON PINE OR DOUGLAS FIR.



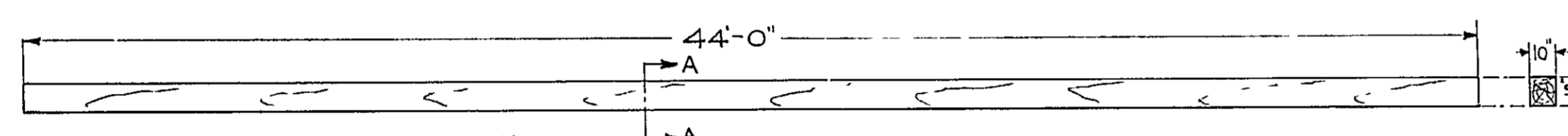
FORE TOPGALLANT MAST
SCALE: 1/4"=1ft.
MATERIAL OREGON PINE OR DOUGLAS FIR.
MATERIAL SQUARE OR 8 SQUARED.
HEART TO BE IN CENTER OF TIMBER.
APPROX. 100 PER CENT BOXED.
1 THUS



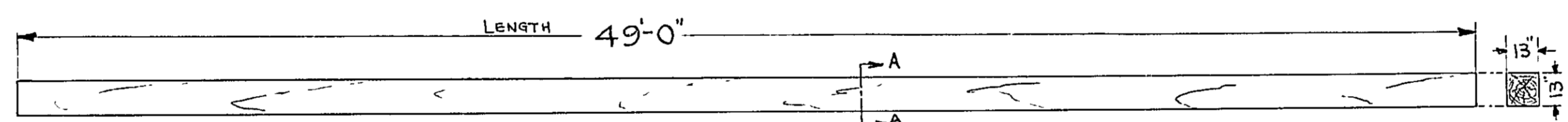
MAIN TOPGALLANT MAST
SCALE: 1/4"=1ft.
MATERIAL OREGON PINE OR DOUGLAS FIR.
MATERIAL SQUARE OR 8 SQUARED.
HEART TO BE IN CENTER OF TIMBER.
APPROX. 100 PER CENT BOXED.
1 THUS



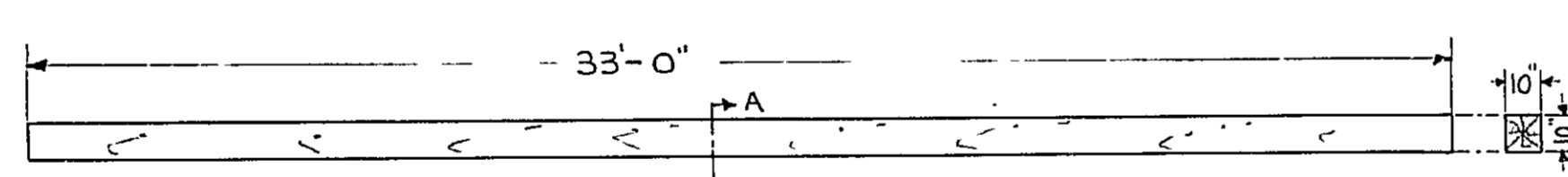
MIZZEN TOPGALLANT MAST
SCALE: 1/4"=1ft.
MATERIAL OREGON PINE OR DOUGLAS FIR.
MATERIAL SQUARE OR 8 SQUARED.
HEART TO BE IN CENTER OF TIMBER.
APPROX. 100 PER CENT BOXED.
1 THUS



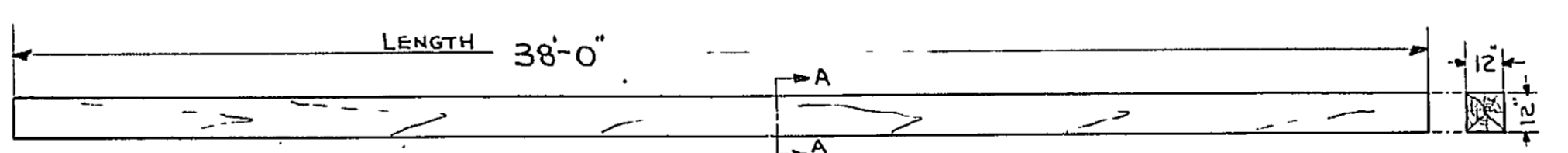
FORE STUDDING SAIL BOOM
SCALE: 1/4"=1ft.
MATERIAL OREGON PINE OR DOUGLAS FIR.
MATERIAL SQUARE OR 8 SQUARED.
HEART TO BE IN CENTER OF TIMBER.
APPROX. 100 PER CENT BOXED.
2 THUS



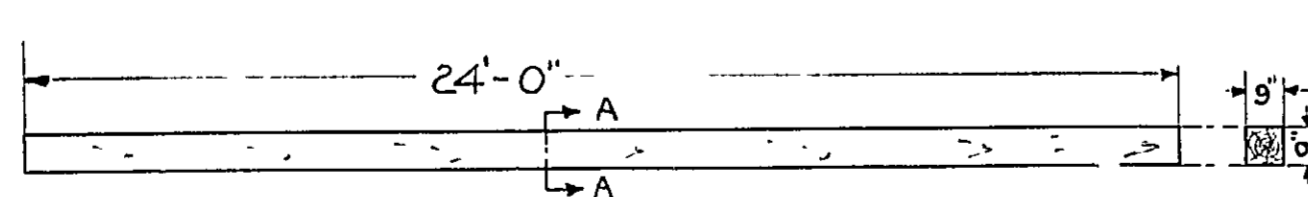
MAIN STUDDING SAIL BOOM
SCALE: 1/4"=1ft.
MATERIAL OREGON PINE OR DOUGLAS FIR.
MATERIAL SQUARE OR 8 SQUARED.
HEART TO BE IN CENTER OF TIMBER.
APPROX. 100 PER CENT BOXED.
2 THUS



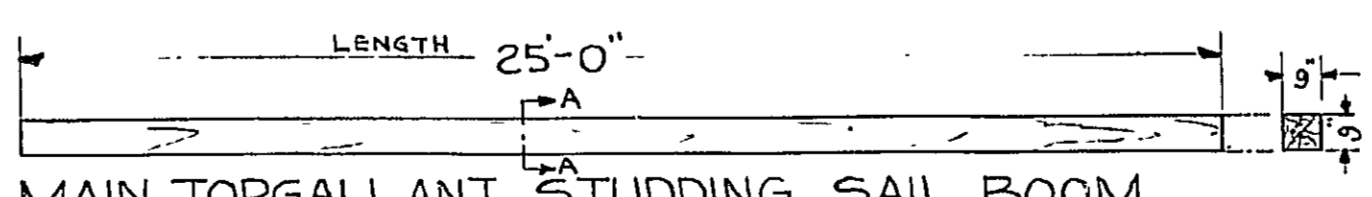
FORE TOPSAIL STUDDING SAIL BOOM
SCALE: 1/4"=1ft.
MATERIAL OREGON PINE OR DOUGLAS FIR.
MATERIAL SQUARE OR 8 SQUARED.
HEART TO BE IN CENTER OF TIMBER.
APPROX. 100 PER CENT BOXED.
2 THUS



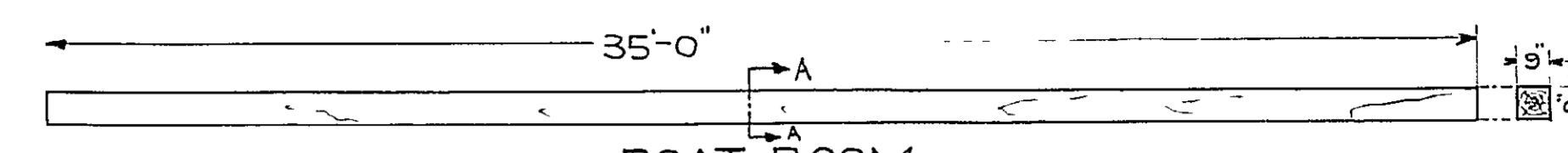
MAIN TOPSAIL STUDDING SAIL BOOM
SCALE: 1/4"=1ft.
MATERIAL OREGON PINE OR DOUGLAS FIR.
MATERIAL SQUARE OR 8 SQUARED.
HEART TO BE IN CENTER OF TIMBER.
APPROX. 100 PER CENT BOXED.
2 THUS



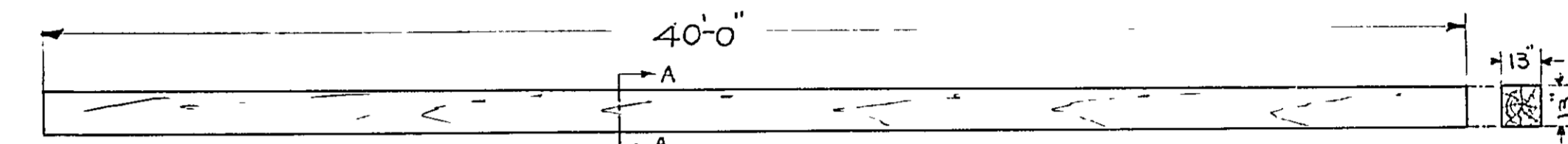
FORE TOPGALLANT STUDDING SAIL BOOM
SCALE: 1/4"=1ft.
MATERIAL OREGON PINE OR DOUGLAS FIR.
MATERIAL SQUARE OR 8 SQUARED.
HEART TO BE IN CENTER OF TIMBER.
APPROX. 100 PER CENT BOXED.
2 THUS



MAIN TOPGALLANT STUDDING SAIL BOOM
SCALE: 1/4"=1ft.
MATERIAL OREGON PINE OR DOUGLAS FIR.
MATERIAL SQUARE OR 8 SQUARED.
HEART TO BE IN CENTER OF TIMBER.
APPROX. 100 PER CENT BOXED.
2 THUS



BOAT BOOM
SCALE: 1/4"=1ft.
MATERIAL OREGON PINE OR DOUGLAS FIR.
MATERIAL SQUARE OR 8 SQUARED.
HEART TO BE IN CENTER OF TIMBER.
APPROX. 100 PER CENT BOXED.
2 THUS



ANCHOR HANDLING BOOM
SCALE: 1/4"=1ft.
MATERIAL OREGON PINE OR DOUGLAS FIR.
MATERIAL SQUARE OR 8 SQUARED.
HEART TO BE IN CENTER OF TIMBER.
APPROX. 100 PER CENT BOXED.
1 THUS

SPECIFICATIONS FOR TOPGALLANT MASTS, YARDS & BOOMS.

TO BE AS PER DIMENSIONS SHOWN ON ASSEMBLY PLAN. TO BE OF DOUGLAS FIR OR OREGON PINE. MATERIAL TO BE HEWN, SAWN, SQUARED OR OCTAGON OR ROUND SELECTED STOCK. YELLOW GROWTH AND SOUND CLOSE GRAINED MATERIAL, FREE FROM ROTTEN STREAKS, LARGE PITCH POCKETS, CLUSTER KNOTS AND AS FREE FROM SMALL KNOTS AS IS POSSIBLE TO OBTAIN. MATERIAL TO BE STRAIGHT GRAIN, FREE FROM WIND SHAKES AND TWISTED GROWTHS. ALL MATERIAL TO BE APPROXIMATELY 100% BOXED. MEASUREMENTS TO BE TAKEN UNDER THE BARK. BRIGHT SAP ON CORNERS OF DRESSED SPAR TIMBER THAT WILL WORK OUT IN ROUNDING WILL BE ALLOWED. SHIPMENT OF MATERIAL - ALL MATERIAL TO BE WELL OILED TO PREVENT CHECKING. MATERIAL TO BE SHIPPED IN NEARLY A HORIZONTAL PLANE TO PREVENT DISTORTION AND PROPERLY SECURED TO PREVENT CHAFING ETC.

THE U.S. FRIGATE CONSTITUTION UPON HER COMPLETION WILL BECOME A FLOATING MUSEUM VISITING THE VARIOUS ACCESSIBLE SEAPORTS OF THE COUNTRY. IT IS THEREFORE DESIRABLE THAT THE FINEST MATERIAL AVAILABLE AS LONGEVITY AND WORKMANSHIP IS AN OUTSTANDING FEATURE OF THE REBUILDING, REFLECTING MUCH PATRIOTIC CREDIT UPON THOSE SUPPLYING MATERIAL ENTERING INTO THE RE-CONSTRUCTION OF THE WORLD'S MOST NOTED SHIP.

RESTORATION 1927

U.S. FRIGATE CONSTITUTION
ASSEMBLAGE OF MATERIAL FOR BUILDING
TOPGALLANT MASTS, YARDS, BOAT BOOMS, STUDDING SAIL BOOMS,
& ANCHOR HANDLING BOOM.

SHEET No. 2 (26 SHEETS)
NAVY YARD, BOSTON SEPT. 1928
SCALE: 1/4" & 1/2"=1ft.

APPROVED FOR MANAGER
John A. Lord
LIEUT. (C.C.) U.S.N.
SUPT. OF RESTORATION