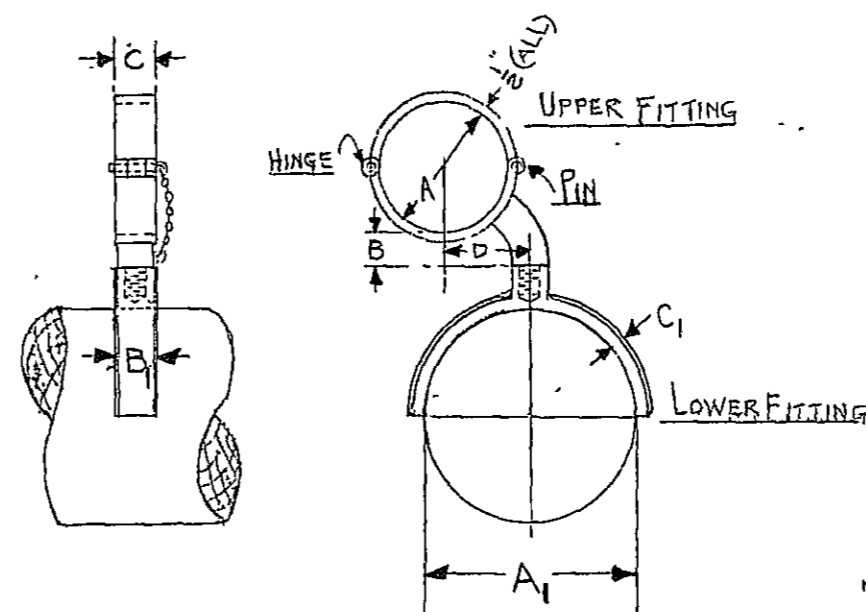


QUARTER IRONS AT BLDG #24						
AMT	A	B	C	D	E	REMARKS
2	8 1/4	1 1/2	14 1/2	8	2 3/4	MAIN YARD
2	8	2	13	5 1/2	2 1/2	FORE do
2	6	2	11 1/4	3	2 1/2	CROSS JACK do
2	5 3/4	1 1/2	12	2	2	MIN. TOPSAIL do
2	5 1/2	2 3/8	10	2 3/4	2 1/4	FORE do do
2	4	2	7 3/4	2	2	MIZ. do do
2	4	IN LINE	6 1/2	4	1 3/4	MIN. TIGAL do
2	4	IN LINE	7 1/4	3 1/2	1 5/8	FORE do do
2	2 7/8	1	4 3/4	2 1/4	1 1/2	MIZ. do do



QUARTER IRONS (EXISTING)				
LOWER FITTINGS				
AMT	A1	B1	C1	REMARKS
2	13	3	1/2	FORE YARD
2	14 1/2	3	1/2	MAIN do
2	11 1/4	2 5/8	1/2	CROSS JACK do
2	10	do	do	F. TOPSAIL do
2	12	do	do	MIN. do do
2	7 3/4	do	do	MIZZ. do do
2	6 1/2	do	do	F. TIGAL do
2	7 1/4	do	do	MIN. do do
2	4 3/4	do	do	MIZZ. do do

QUARTER IRONS (EXISTING)						
UPPER FITTINGS						
AMT	A	B	C	D	REMARKS	
2	8 1/4	2	2 1/2	5 1/2	FORE YARD	
2	8 1/4	1 1/2	2 3/4	8	MAIN do	
NOT USED x	2	6	2	2 1/2	3	CROSS JACK do
	2	5 1/2	2 3/8	2 1/4	2 3/4	FORE TOPSAIL do
	2	5 3/4	1 1/2	2	2	MAIN do do
NOT USED x	2	4	IN LINE	1 3/4	4	MIZZEN do do
	2	4	IN LINE	1 5/8	3 1/2	FORE TIGAL do
	2	4	2	2	2	MAIN do do
NOT USED x	2	2 7/8	1	1 1/2	2 1/4	MIZZEN do do

NOTE: SEE OTHER SHEET FOR
END IRONS

SHEET No. 1
(2 SHEETS)

Frigate Constitution

Primit restoration 1927-1931

CONSTITUTION RESTORATION
1927-1931

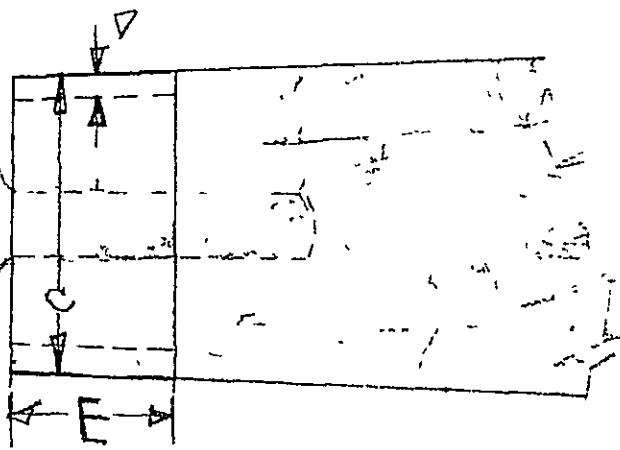
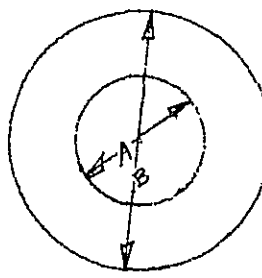
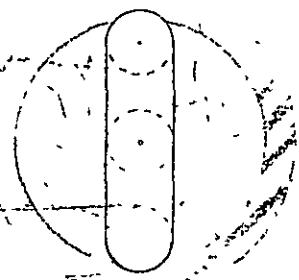
BOOM, STUDDING SAIL, END
AND QUARTER IRONS

BOSTON No.

1X21 25527

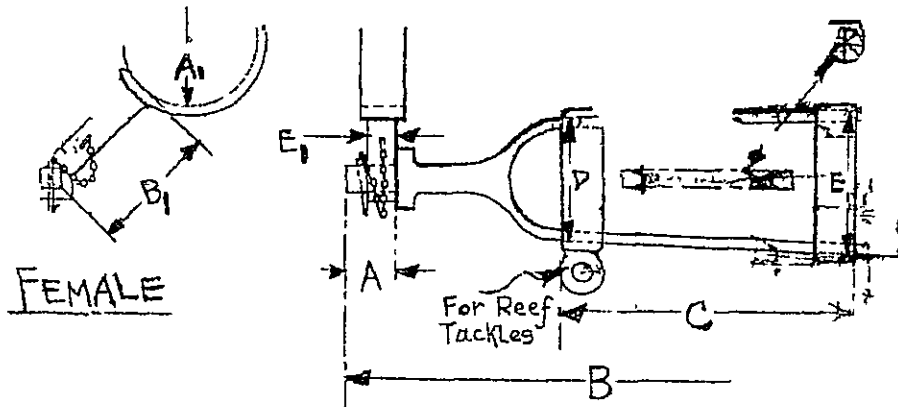
SCALE

SHEET 1 OF 2



ROYAL YARDS						
AMT	A	B	C	D	E	REMARKS
2	1	2	2 ³ / ₈	3/16	1 ¹ / ₄	FORE
2	1	2	2 ³ / ₄	3/16	1 ¹ / ₄	MAIN
2						

(EXISTING)



These fittings may differ - 1906 - use

END IRONS (MALE) EXISTING						
AMT	A	B	C	D	E	REMARKS
2	3	32	18	7 ¹ / ₂	9	FORE YARD
2	4	35	20	8 ¹ / ₂	10 ¹ / ₂	MAIN do
2	3	33	20	6 ¹ / ₄	8 ¹ / ₄	CROSS JACK do
2	3 ¹ / ₂	32	21	6 ³ / ₄	8	WITH SHEAVE MAIN TOPSAIL do
2	2 ¹ / ₂	28	18	6	7	WITH SHEAVE FORE do do
2	2 ¹ / ₂	22	14 ¹ / ₂	5	5 ¹ / ₂	WITH SHEAVE MIZ. do do

THESE FITTINGS ARE ON EXISTING SPARS AT BLDG #106

END IRONS (FEMALE) EXISTING						
AMT	A ₁	B ₁	C ₁	D ₁	E ₁	REMARKS
2	8 ⁽¹³⁾	8 ⁽¹¹⁾	2 ³ / ₄	1 ³ / ₄	1 ³ / ₄	WITH ROLLER FORE YARD
2	9 ⁽¹³⁾	11 ⁽¹¹⁾	3 ¹ / ₄	1 ³ / ₄	1 ³ / ₄	WITH ROLLER MAIN do
2	7 ⁽¹³⁾	8 x	3	1 ³ / ₄	1 ³ / ₄	C. JACK do
2	6 ⁽¹³⁾	6 ⁽¹¹⁾	1 ³ / ₄	1 ¹ / ₂	1 ³ / ₈	F. TOPSAIL do
2	7 ⁽¹³⁾	8 ⁽¹¹⁾	2 ¹ / ₂	1 ³ / ₄	1 ¹ / ₂ DIA	MN. do do
2	6 ⁽¹³⁾	5 ⁽¹¹⁾	2	1 ³ / ₄	1 ¹ / ₂	FTGAL. do
2	4 ⁽¹³⁾	5 ⁽¹¹⁾	1 ³ / ₈	1	1	FTGAL. do
2	3 x	3 ¹ / ₄ x	1 ³ / ₈	7/8	1	MIZ do do

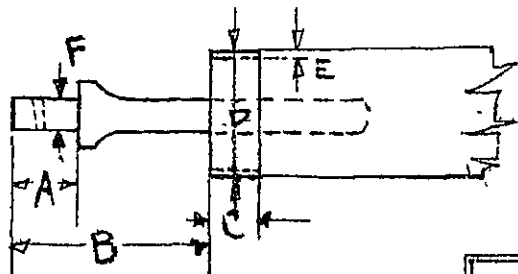
NOT USED

NOT USED

NOTE ALL THESE FITTINGS ARE ON EXISTING SPARS AT BLDG #106

Frigate Completion

Plan of Restoration 1927-1931



TOPGALLANT YARDS							
AMT	A	B	C	DIA.	E	F	REMARKS
2	2	6	1 ¹ / ₂	3 ⁷ / ₈	3/16	1	FORE
2	2	6	1 ¹ / ₂	3 ⁷ / ₈	3/16	1	MAIN
2	1 ³ / ₄	5 ¹ / ₂	1 ³ / ₄	3	3/16	7/8	MIZZEN

(EXISTING)

BOSTON No.

IX21 25527

SHEET 2 OF 2