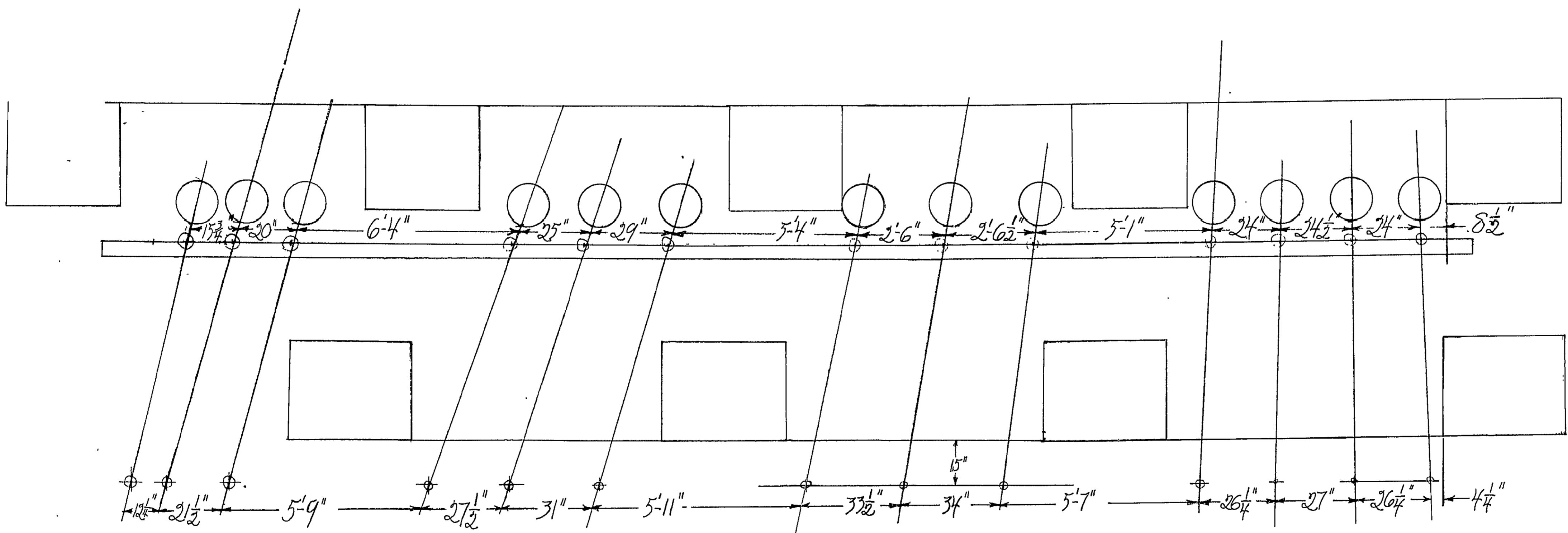
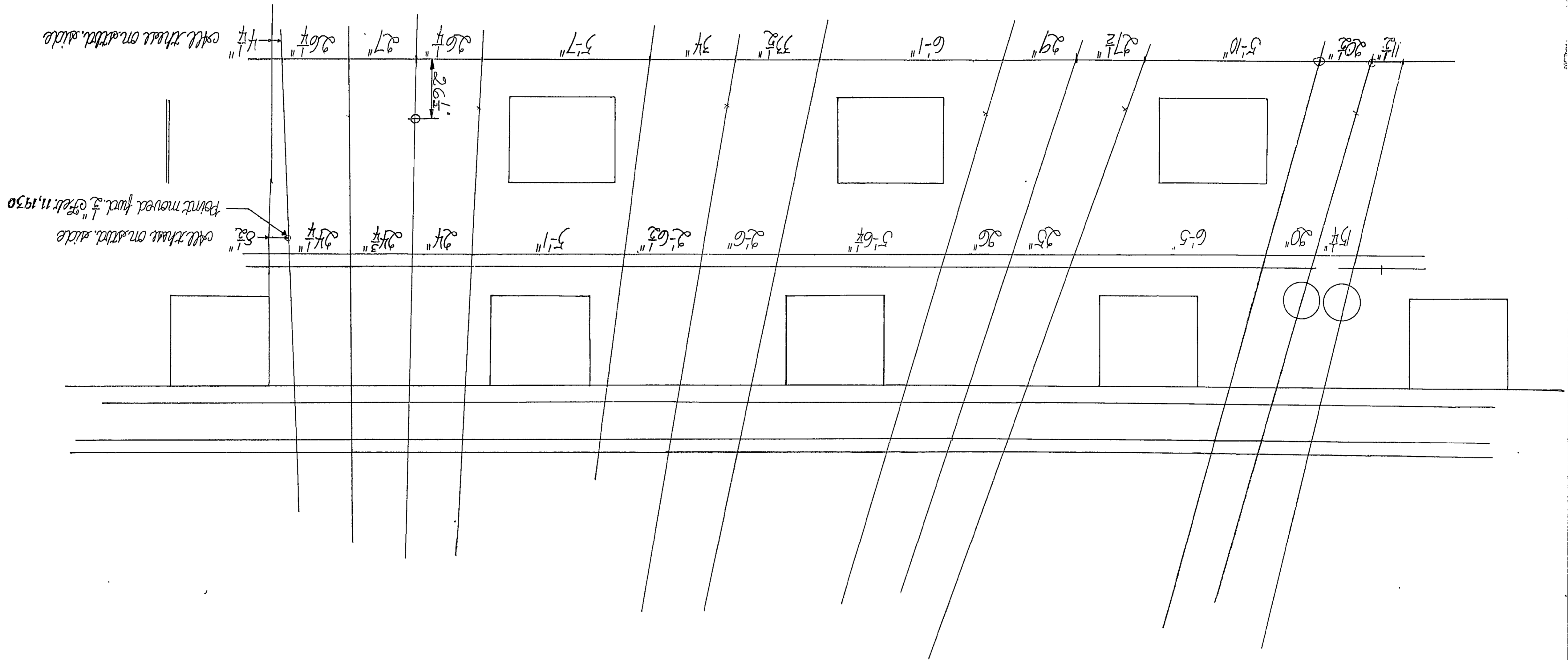


Main Mast & Shrouds Starboard Side  
With points as located on ship checked Feb. 8 1930



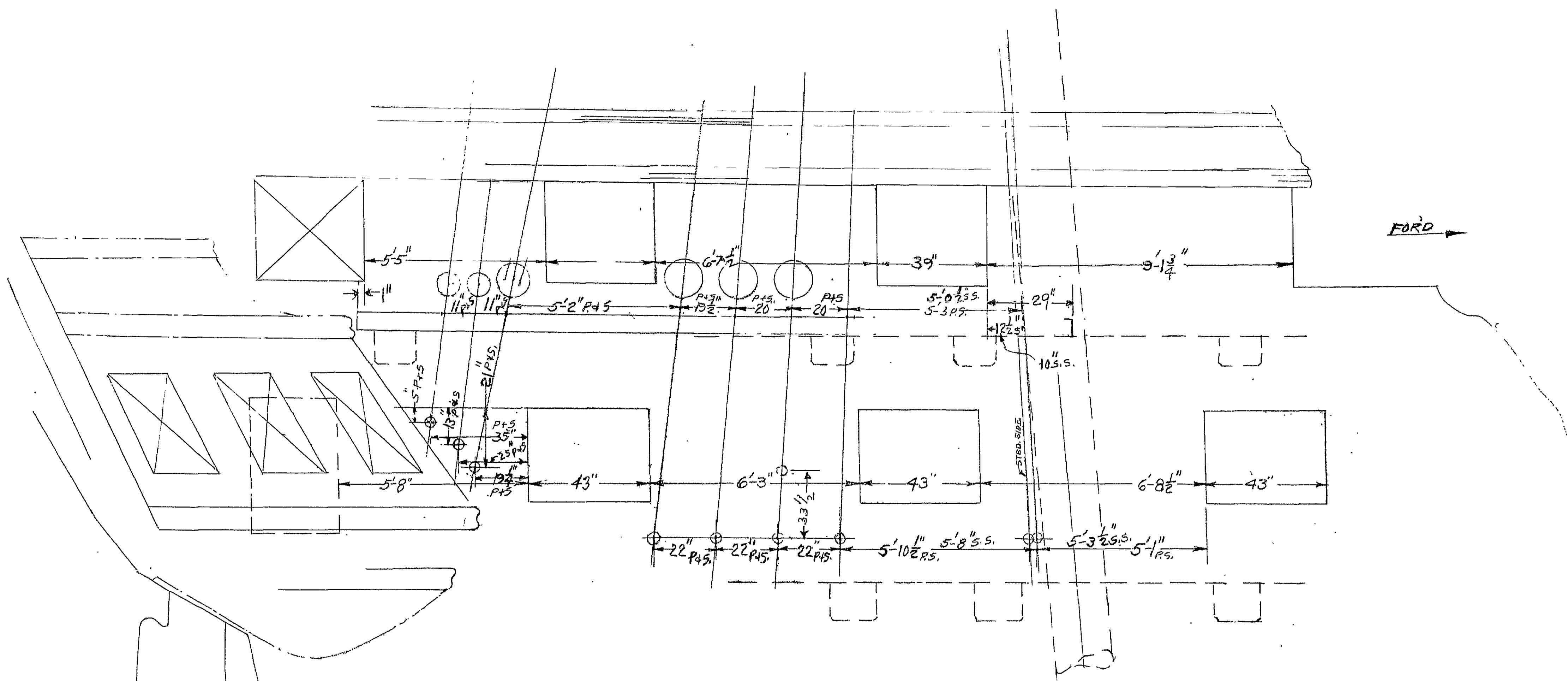
Main Mast & Shrouds Port Side  
With points as located on ship checked Feb. 5, 1930

SEE NAUSHIP DWG # 4513172

Frigate Constitution  
Chain plates

25013

Drawing of Main Mast & Shrouds



U. S. Frigate Constitution (These points checked from ship Port & Starboard side Feb. 12 & 13<sup>th</sup> 1930)  
Mizzen Mast & Shroudes

Frigate Constitution  
Chain plates  
3 sheets

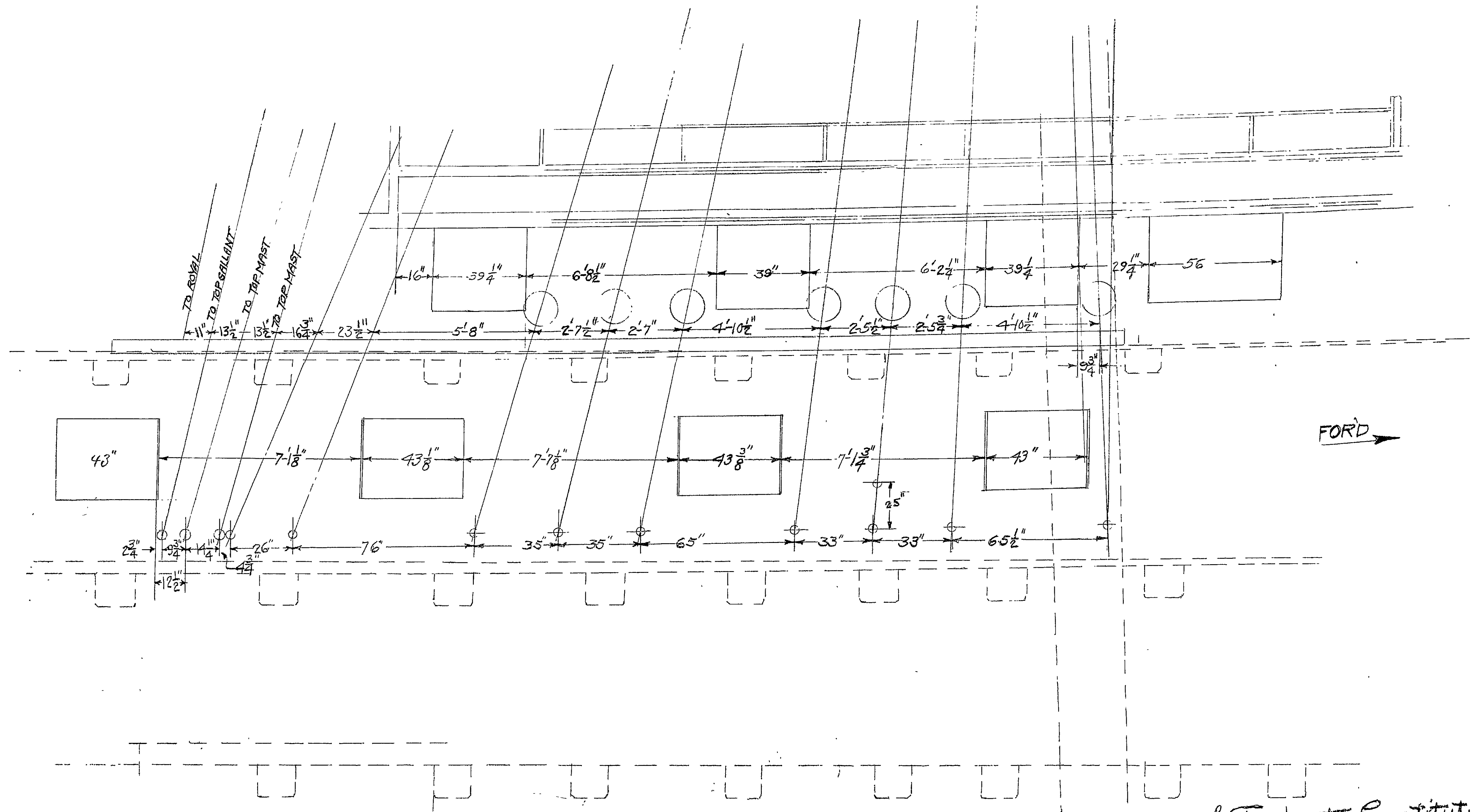
SEE NAVSHIPS DWG #4513172

BOSTON NAVAL SHIPYARD

CHAIN PLATES

IX21 25013

SCALE 1/2" = 1'-0" SHEET 2 OF 3



U. S. Frigate Constitution  
 Fore Mast & Shrouds  
 1/2" = 1 FT.

Chain plates

3 sheets

IX21 25013

SCALE 1/2" = 1' 0"

SHEET 3 OF 3