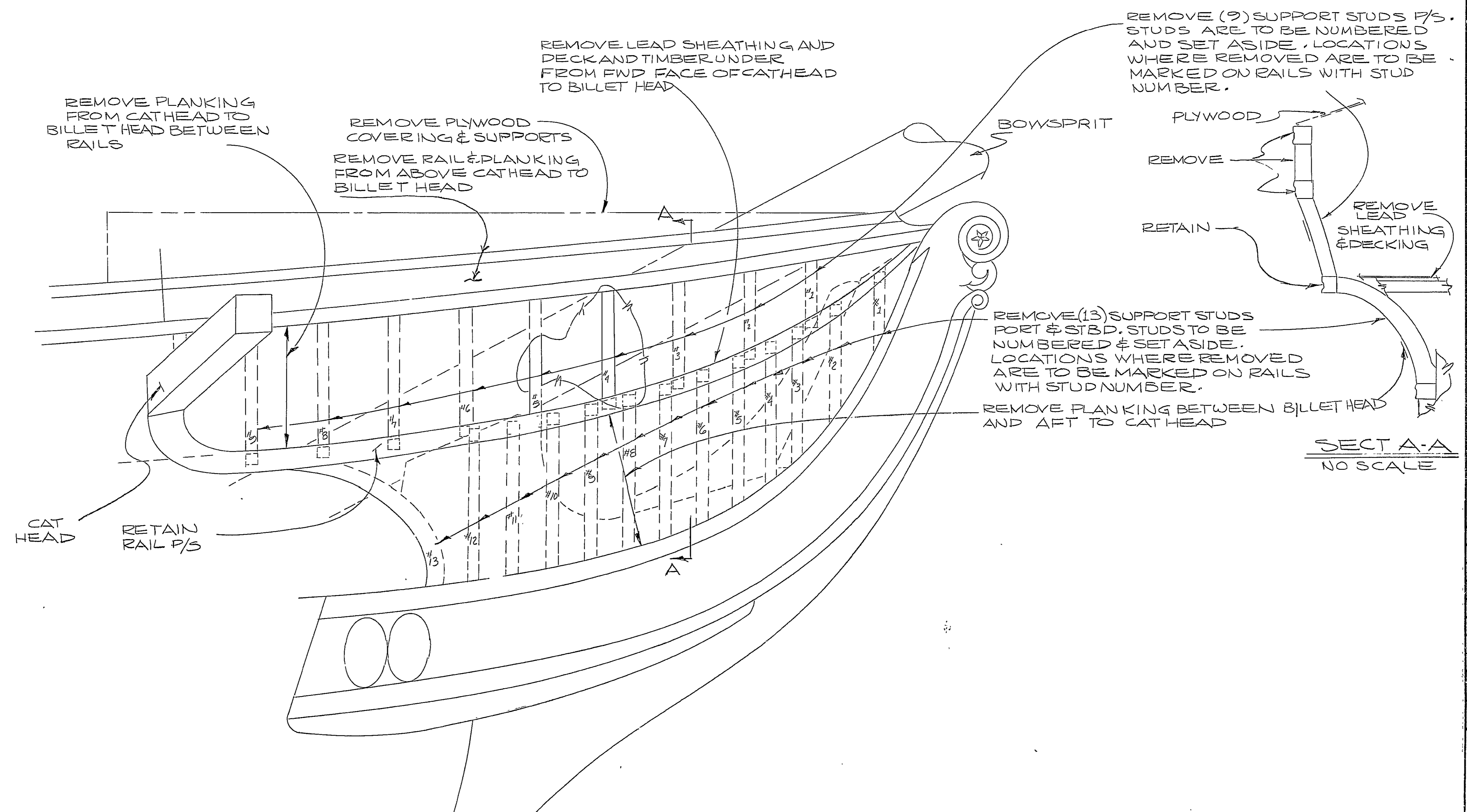


WEIGHT AND MOMENT FOR MATERIAL SHOWN ON THIS DRAWING (TOTALS BY WEIGHT GROUP)									
REV	ADD OR DEDUCT	WEIGHT GROUP	WEIGHT (LBS)	VERTICAL		LONGITUDINAL		TRANSVERSE	
				LEVER (FT)	MOMENT (FT LBS)	LEVER F/A (FT)	MOMENT (FT LBS)	LEVER P/S (FT)	MOMENT (FT LBS)
A									
B									

REVISIONS			
REV	ZONE	DESCRIPTION	BY DATE/APPD
A		APPROVAL SIGNATURE ADDED	
B		DWG REVISED THROUGHOUT TO REFLECT CONDITIONS EXISTING ON SHIP.	JPC 7/21/75

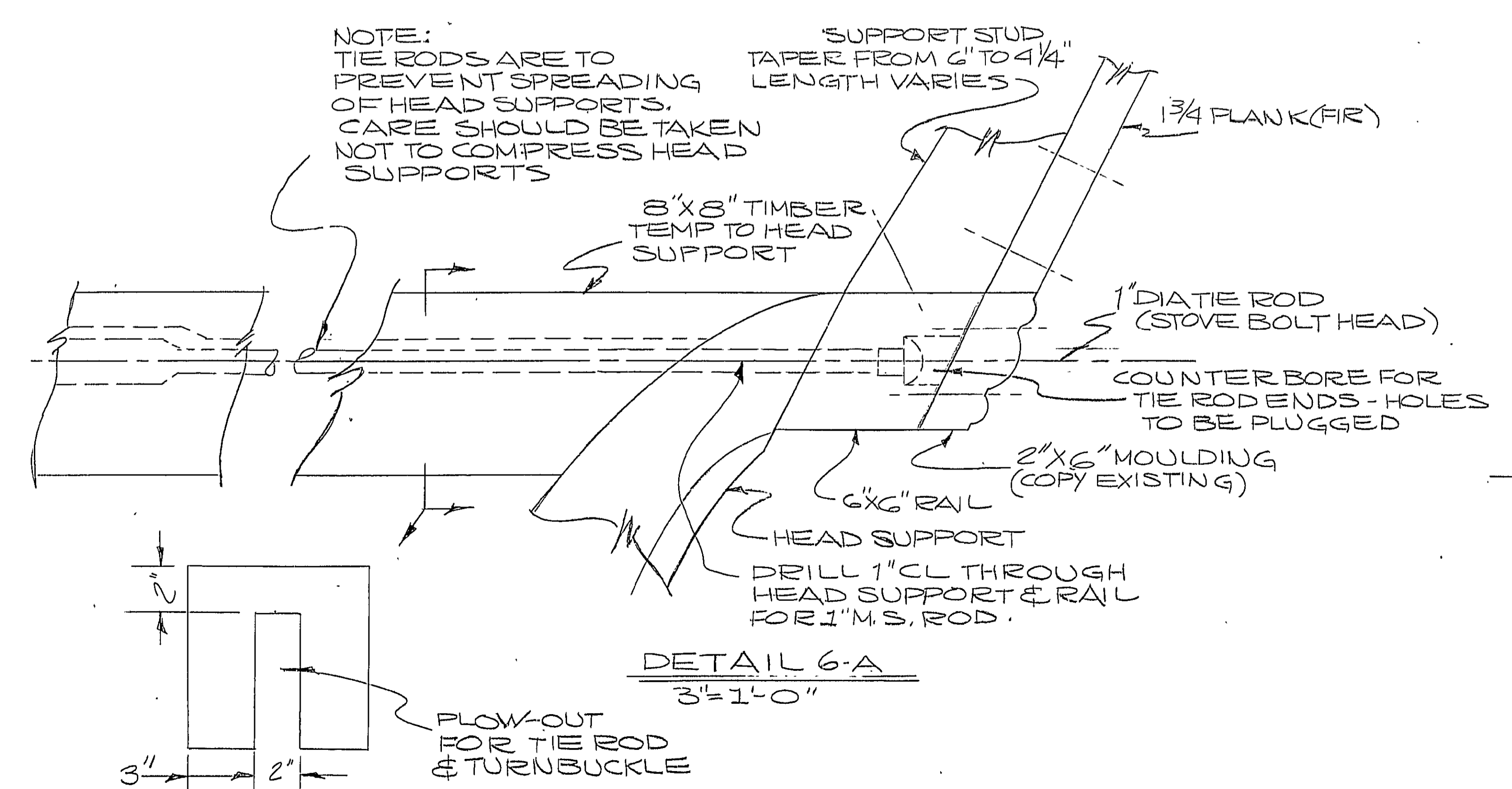
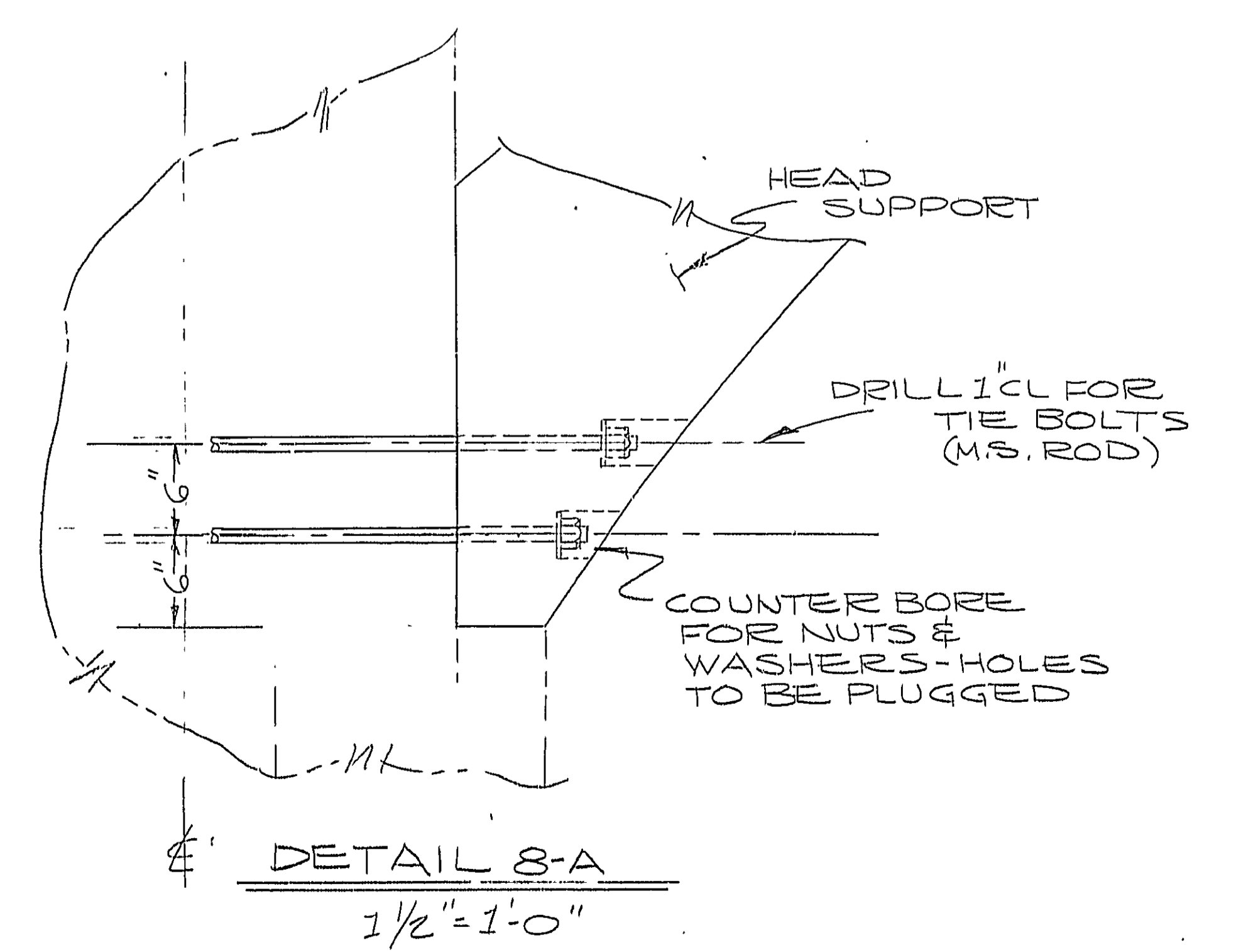
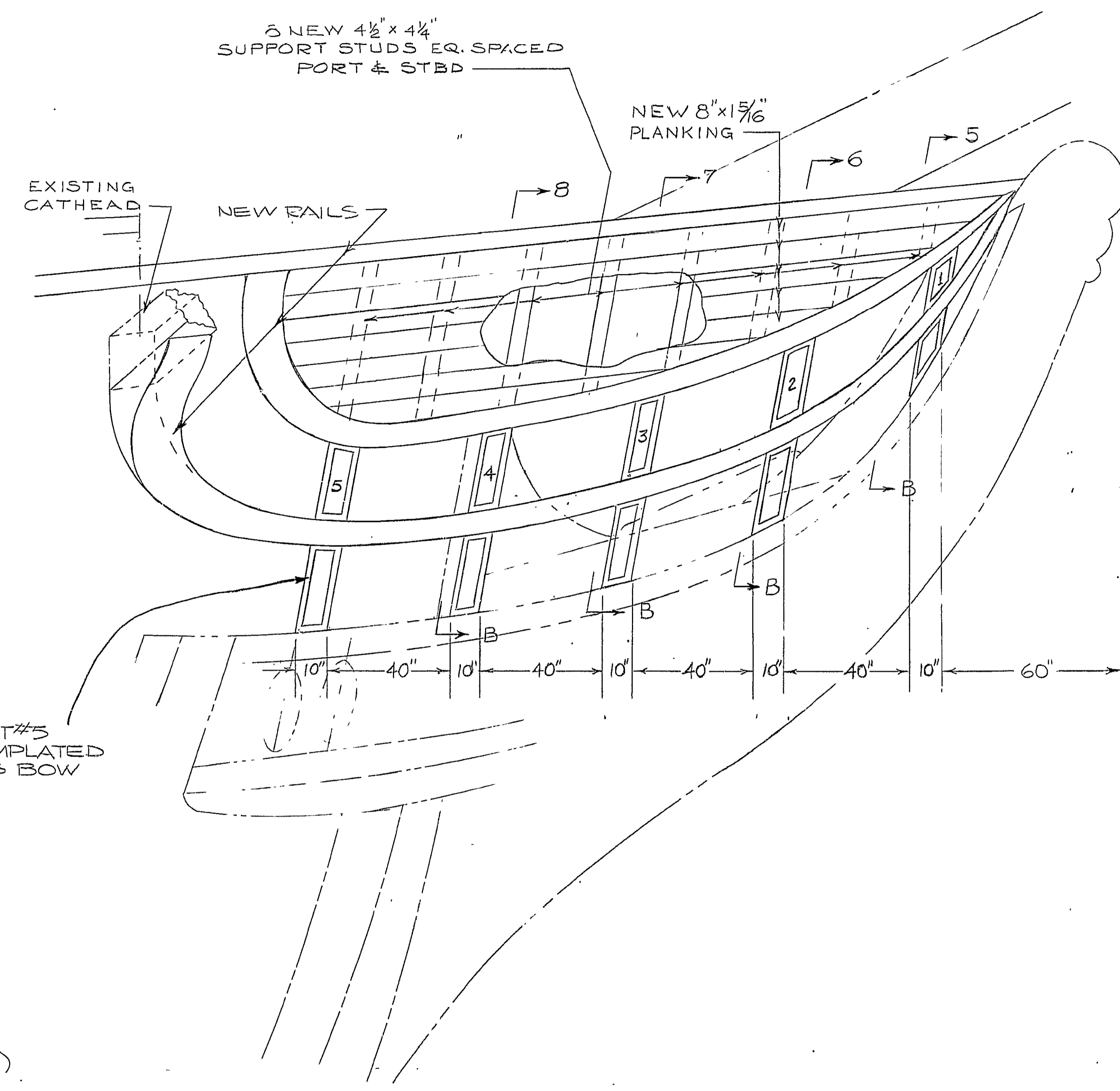
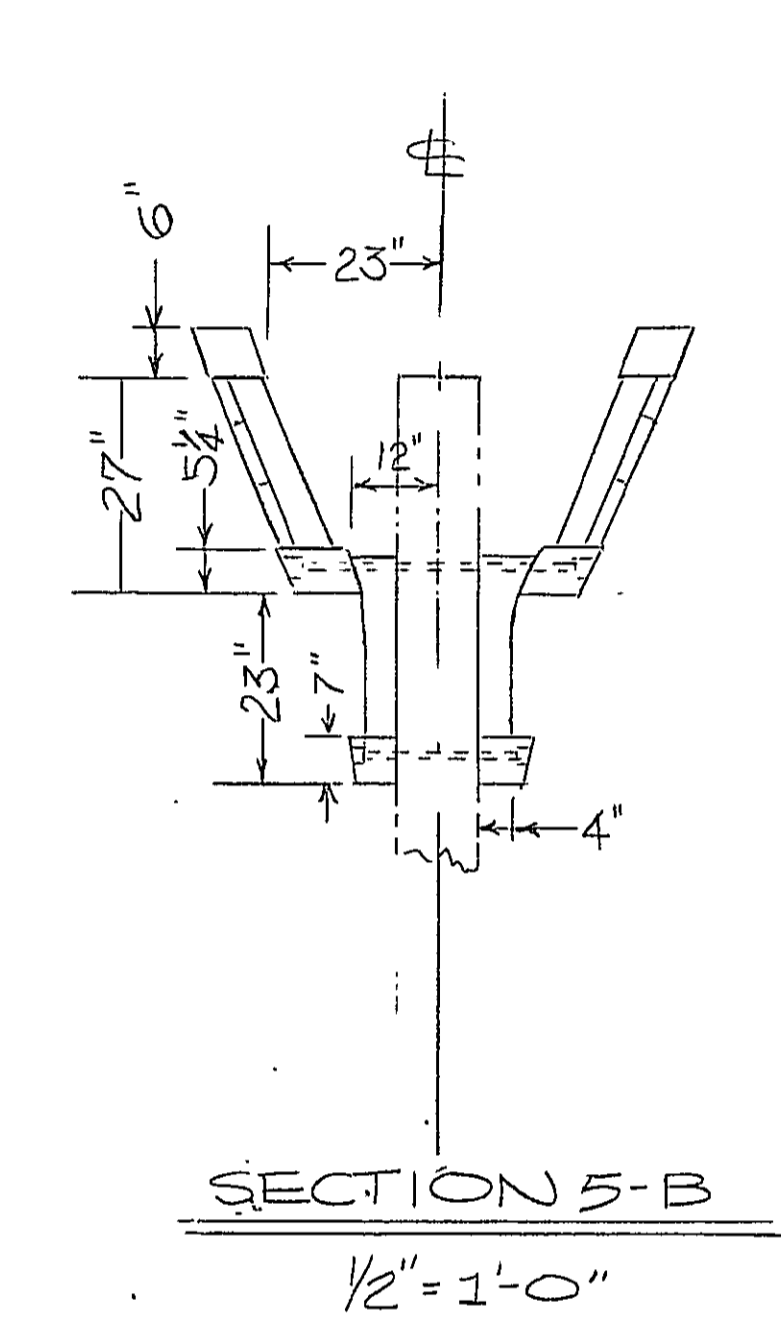
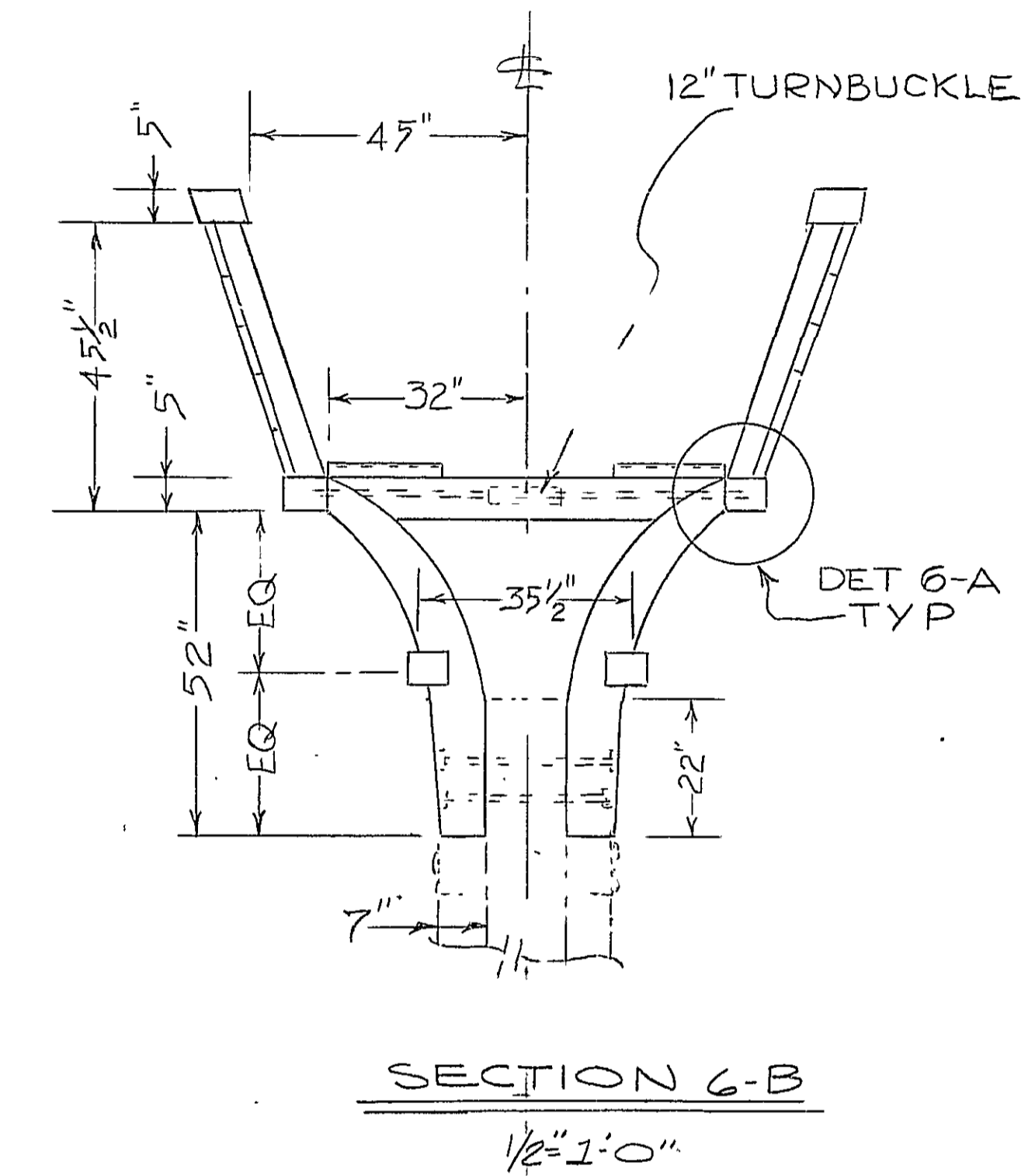
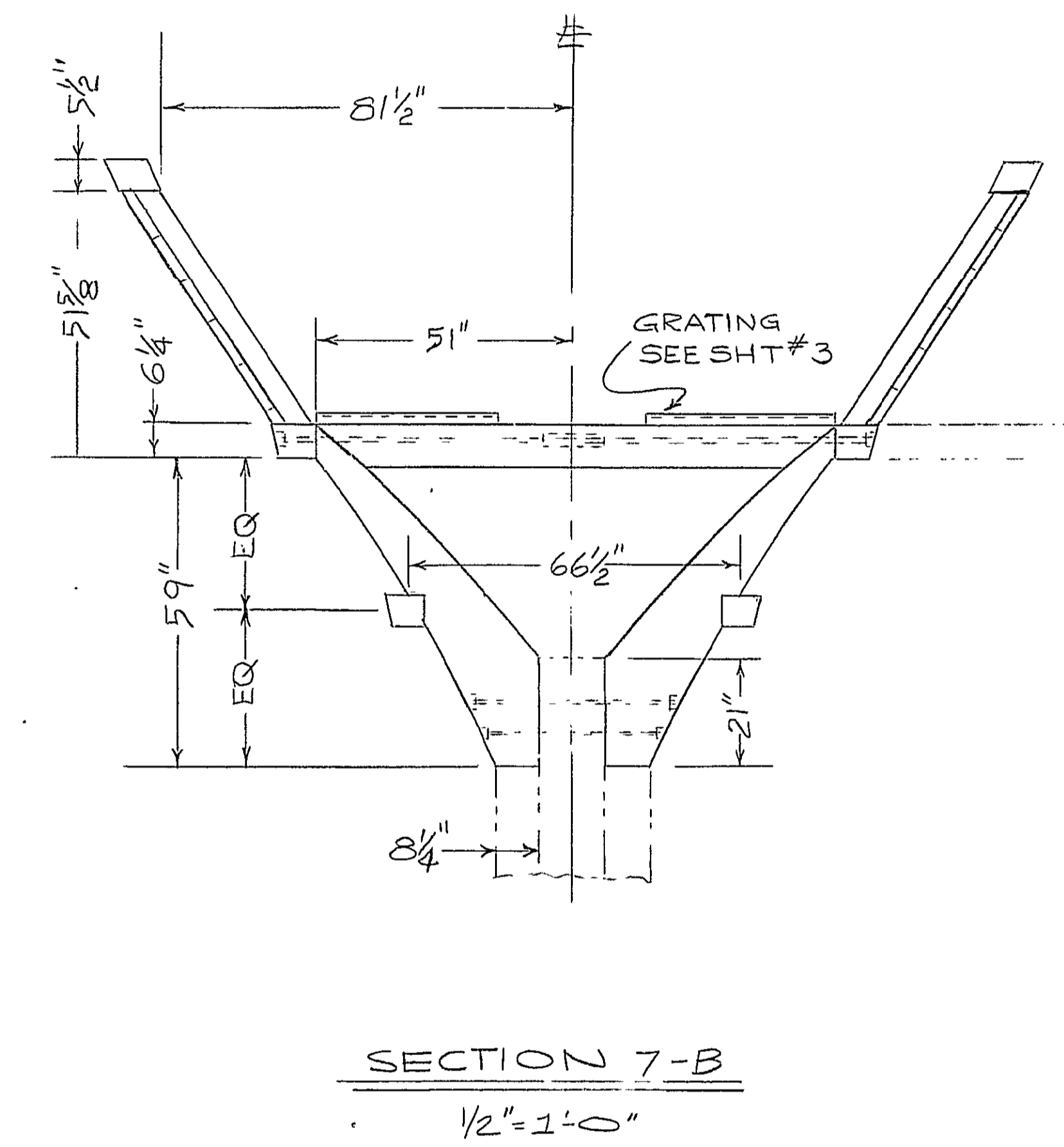
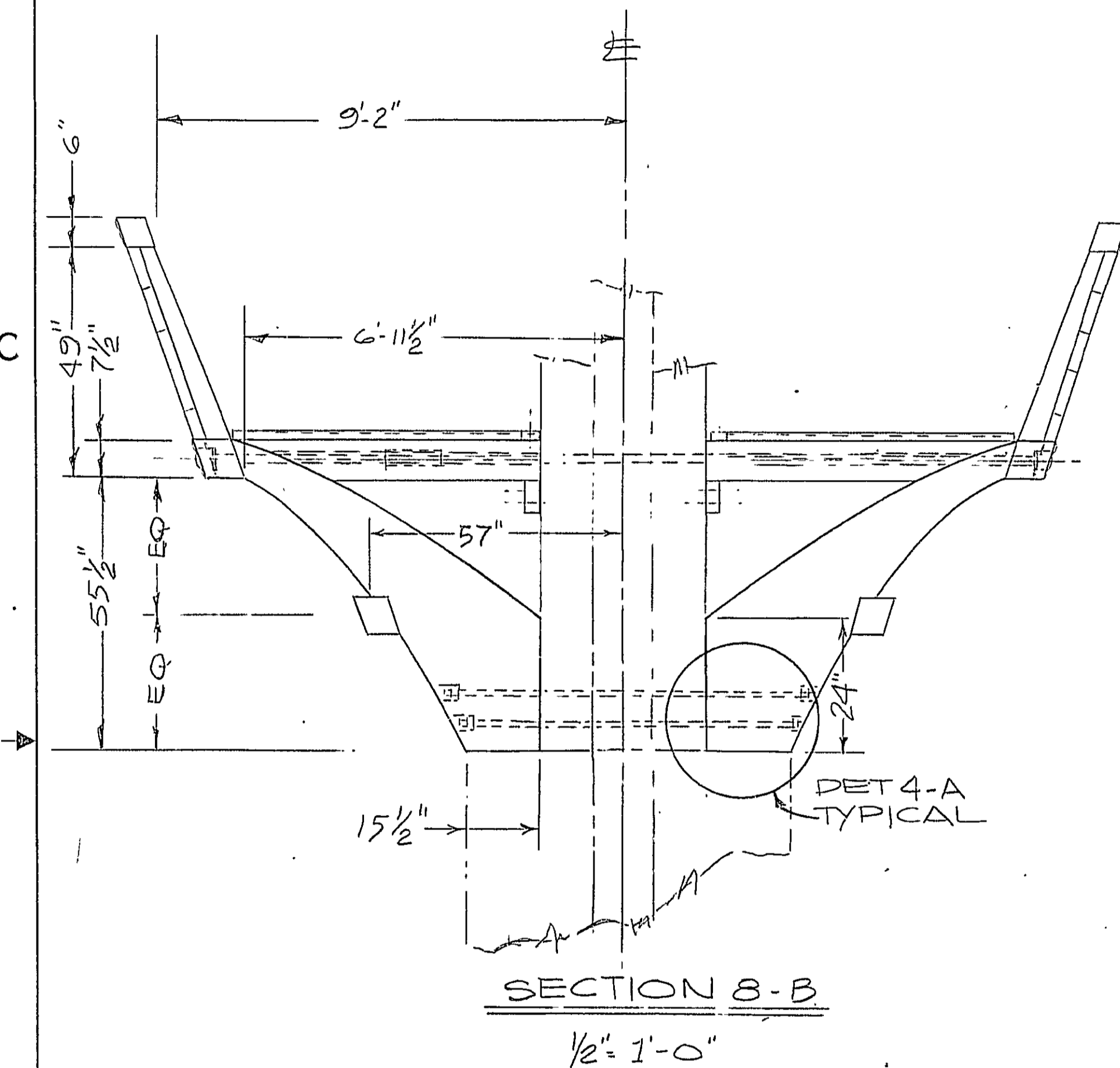
NOTE
THIS DRAWING REFLECTS THE CONFIGURATION OF THE BOW AREA (CREWS HEAD) CIRCA 1812. CONSIDERABLE RESEARCH WAS UNDERTAKEN AS A BASIS FOR THIS PROPOSAL. AFTER REVIEWING ALL MATERIAL AVAILABLE THIS CONCEPT IS CONSIDERED THE MOST ACCURATE.



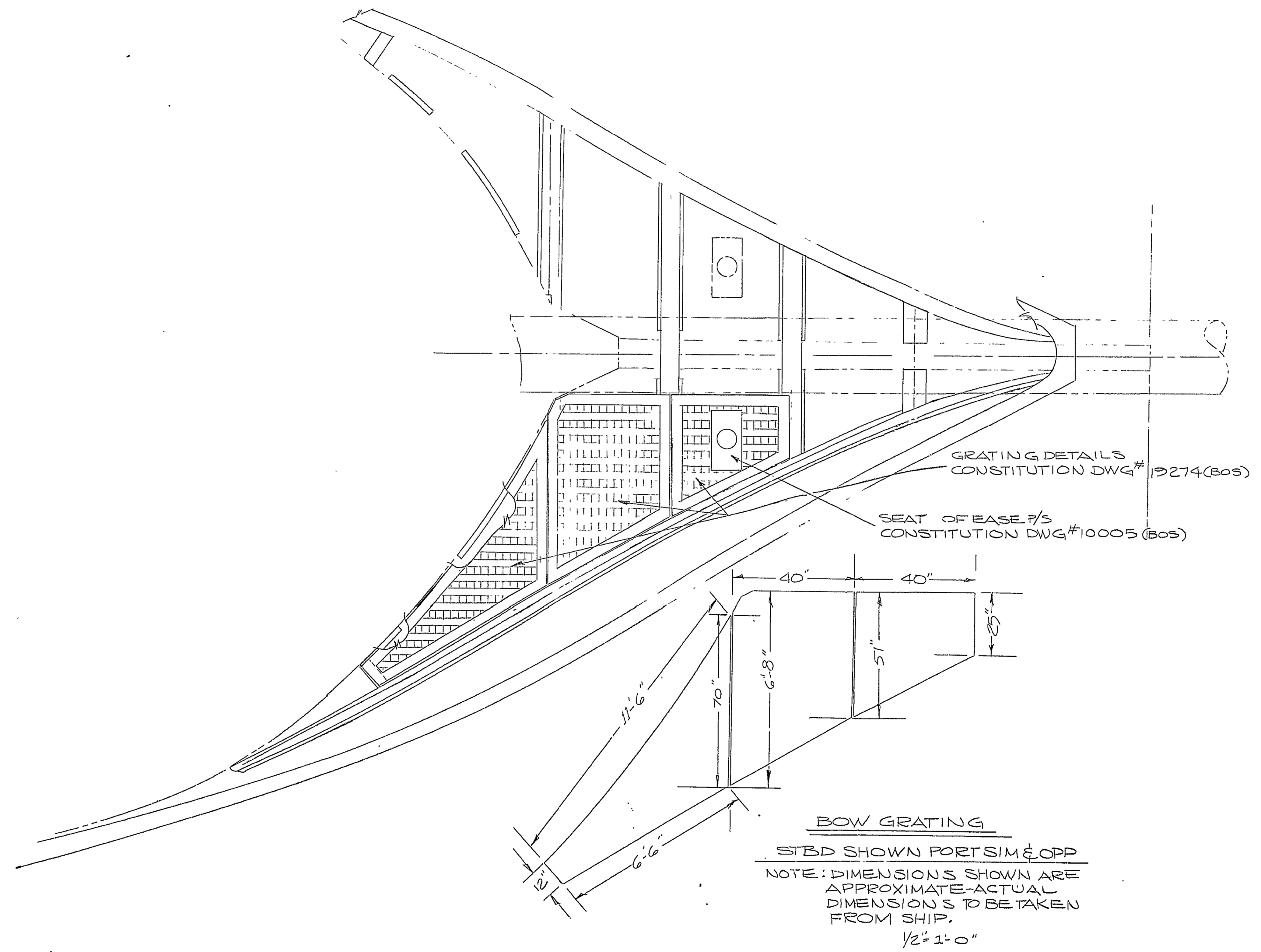
REMOVALS
STBD BOW SHOWN PORT SIM & OPP
SCALE 1/2" = 1'-0"

NO.	TITLE	NAVSHIPS DWG NO.
REFERENCES		
AUTH:	CODE 905 MEMO OF 13 JAN 1975	
EXAMINED	IX 21	USS CONSTITUTION
	SHIP IDENT. NO. & NAME	
	BOSTON NAVAL SHIPYARD BOSTON, MASS. 02129	
CODE	2502	EXT. 35
BRANCH HD	CREWS HEAD AREA MODIFICATION	
CHECKED	J. Conway	
DRAWN	C. H.	
APPD FOR DESIGN DIV	DATE 7/21/75	SIZE CODE IDENT. NO. NAVSHIPS DWG NO. REV
APPD (OTHER THAN DESIGN DIV)	H 311060 1/2X 145 4648371	B
	SCALE: AS SHOWN	SHEET 1 OF 3

NO.	RESERVATION	ESTIMATED RELEASE DATE
-----	-------------	------------------------



CREWS HEAD AREA MODIFICATION (PROPOSAL)			
SIZE	CODE IDENT. NO.	NAVSHIPS DWG. NO.	REV
H	80060/1X21	145 4648371	B
SCALE: 1/2" = 1'-0"			SHEET 2 OF 3



CREWS HEAD AREA
MODIFICATION
(PROPOSAL)

SIZE	CODE IDENT. NO.	NAVSHIPS DWG. NO.	REV
H	80060 /IX21	145 4648371	B
SCALE: 1/2" = 1'-0"			SHEET 3 OF 3