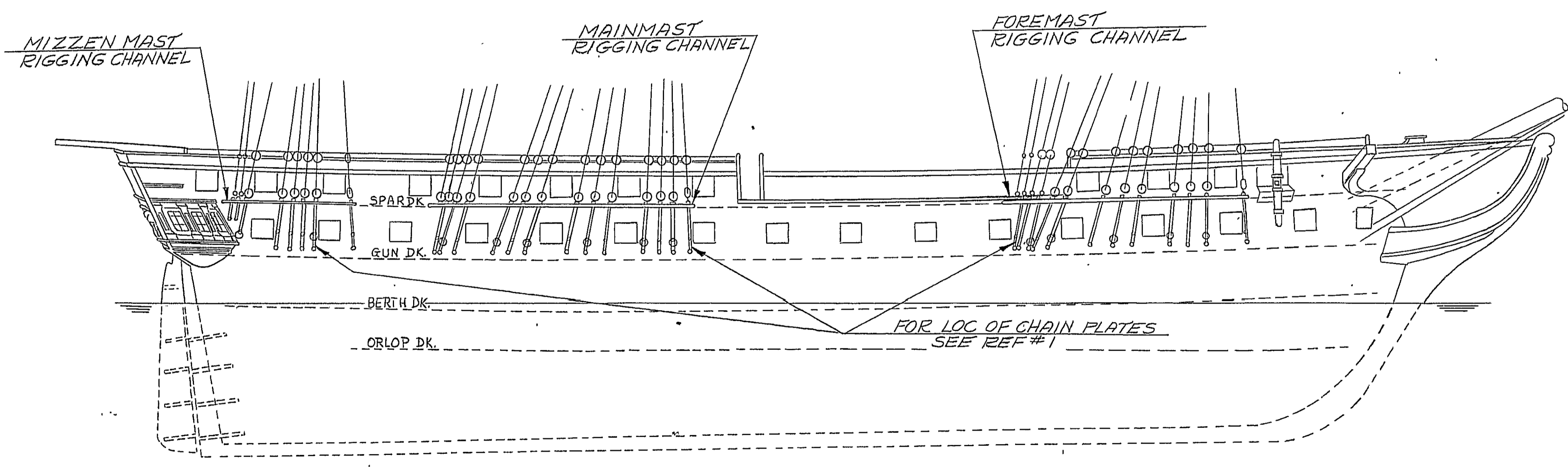


PLAN 3-A



EL 3-B

WEIGHT AND MOMENT FOR MATERIAL SHOWN ON THIS DRAWING (TOTALS BY WEIGHT GROUP)									
REV	ADD OR DEDUCT	WEIGHT GROUP	WEIGHT (LBS)	VERTICAL LEVER (FT)	VERTICAL MOMENT (FT LBS)	LONGITUDINAL LEVER (FT)	LONGITUDINAL MOMENT (FT LBS)	TRANSVERSE LEVER (FT)	TRANSVERSE MOMENT (FT LBS)
A									

REVISIONS			
REV	ZONE	DESCRIPTION	BY DATE APPD
A		APPROVAL SIGNATURE ADDED	12-20-71

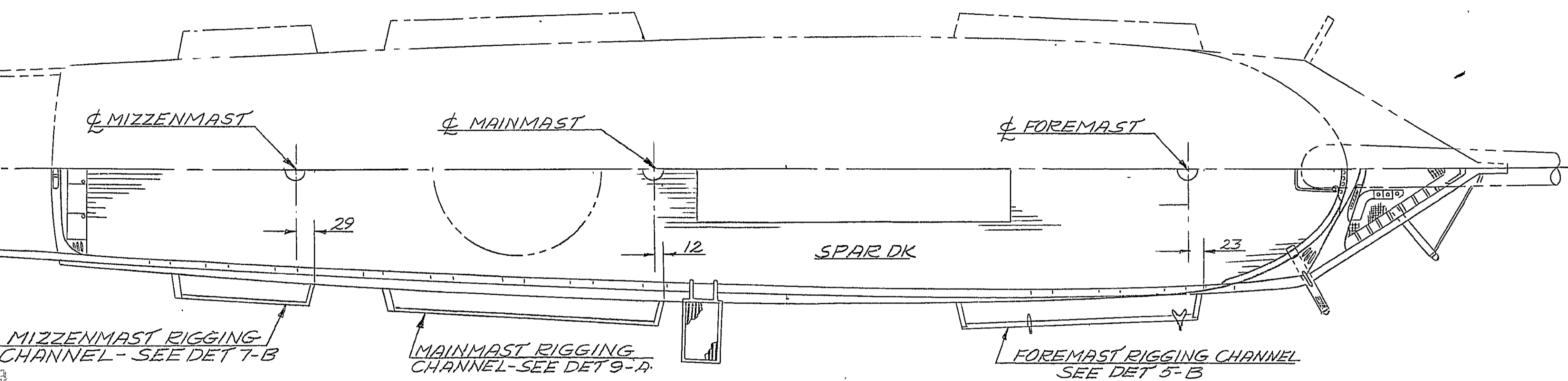
FOR LIST OF MATERIAL SEE SHEET NO. _____

"THIS DRAWING WAS DEVELOPED IN ACCORDANCE WITH THE LATEST ISSUES OF THE STANDARDS LISTED IN MIL-D-1000 AND INCLUDES THE STANDARDS DESIGNATED IN THE A-B-C NAVAL TRIPARTITE STANDARDIZATION AGREEMENTS: ONM INSTRUCTIONS 5711.34 OF 20 DECEMBER 1962 AND 5711.36 OF 28 DECEMBER 1962."

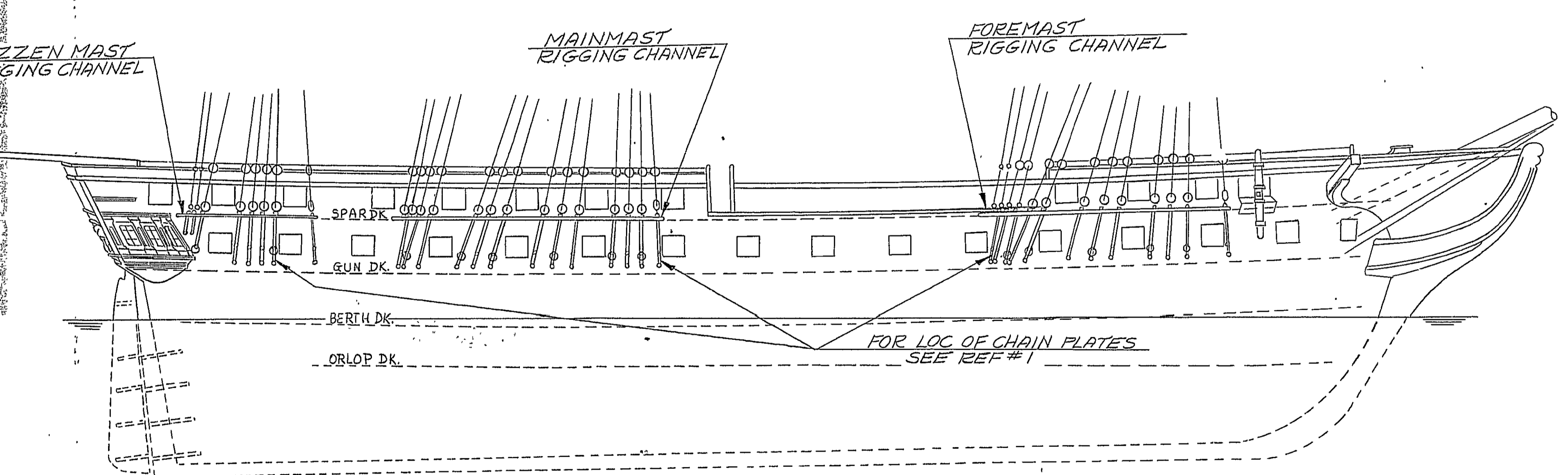
* DRAWINGS, SO MARKED, ARE AFFECTED BY THIS DRAWING, AND SHIP PLAN INDICES SHOULD SO STATE.

NO.	TITLE	NAVSHIPS DWG NO.
5	BOAT DAVITS & FTGS - 28' WHALE BOAT	23473
4	CHAIN PLATES	25363
3	CHANNEL BKTS	25351
2	GEN. ARR. GUNPORTS, RIG. CHANN., CHAIN P., DEAD-EYES	14454
1	CHAIN PLATES	BOSTON NP 25013

REFERENCES	
AUTH:	1970 RESTORATION
EXAMINED	BOSTON NAVAL SHIPYARD BOSTON, MASS. 02129
SHIP IDENT. NO. & NAME	1X21 U.S.F. CONSTITUTION
CODE	254 EXT. 576
BRANCH HD	BRANCH SUPPLY Johnson
CHECKED	C. BOUCHER
DRAWN	C. ARGAND
DATE	12-20-71
SIZE	H 80060
NAVSHIPS DWG NO.	4513172
SCALE:	AS NOTED



PLAN 3-A



EL 3-B

WEIGHT AND MOMENT FOR MATERIAL SHOWN ON THIS DRAWING (TOTALS BY WEIGHT GROUP)										
REV	ADD OR DEDUCT	WEIGHT GROUP	WEIGHT (LBS)	VERTICAL		LONGITUDINAL			TRANSVERSE	
				LEVER (FT)	MOMENT (FT LBS)	LEVER (FT)	F/A	MOMENT (FT LBS)	LEVER (FT)	P/S
A										

REVISIONS				
REV	ZONE	DESCRIPTION	BY	DATE
A		APPROVAL SIGNATURE ADDED		12/21/71

FOR LIST OF MATERIAL SEE SHEET NO. 1

"THIS DRAWING WAS DEVELOPED IN ACCORDANCE WITH THE LATEST ISSUES OF THE STANDARDS LISTED IN MIL-D-1000 AND INCLUDES THE STANDARDS DESIGNATED IN THE A-B-C NAVAL TRIPARTITE STANDARDIZATION AGREEMENTS: ONM INSTRUCTIONS 5711.34 OF 20 DECEMBER 1962 AND 5711.36 OF 28 DECEMBER 1962."

* DRAWINGS, SO MARKED, ARE AFFECTED BY THIS DRAWING, AND SHIP PLAN INDICES SHOULD SO STATE.

NO.	TITLE	NAVSHIPS DWG NO.
5	BORT DAVITS & FTGS - 28' WHALE BOAT	23473
4	CHAIN PLATES	25363
3	CHANNEL BRKS	25351
2	GEN. ARR. GUNPORTS, RIG. CHANN., CHAIN R., DEAD-EYES	14454
1	CHAIN PLATES	BOSTON NP 25013

REFERENCES	
AUTH:	1970 RESTORATION
EXAMINED	BOSTON NAVAL SHIPYARD BOSTON, MASS. 02129
CODE	254
BRANCH HD	Johnson
CHECKED	C. BOUCHER
DRAWN	C. ARCAD
APPD FOR DESIGN DIV.	DATE 12-10-71
APPD FOR DESIGN DIV.	DATE 12-10-71
APPD FOR DESIGN DIV.	DATE 12-10-71

JOB ORDER NO.	PROJECT
52857/50252	

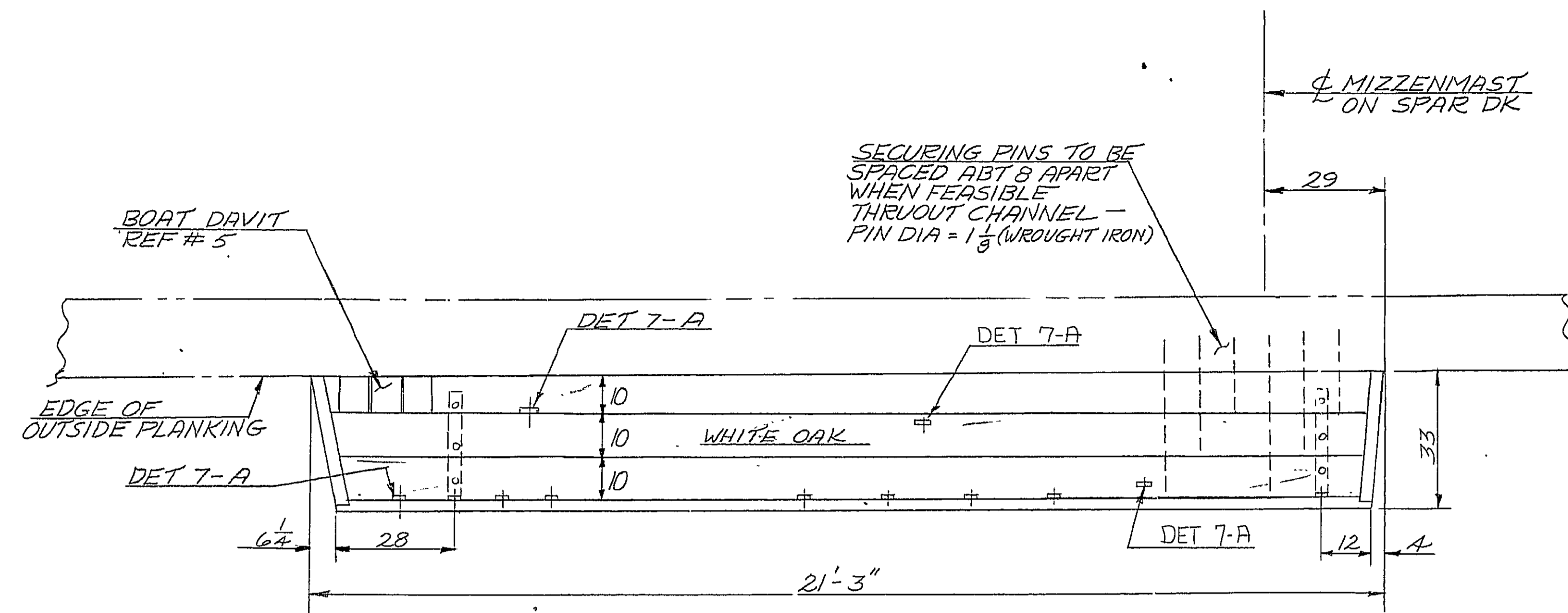
ISSUES	DATE	REVISION	P & E	SHIP SUPT	SHOP
		A			

- NAVSHIP SYSCOM
- NAVORD SYSCOM
- NAVIR SYSCOM
- PORTSMOUTH
- PHILADELPHIA
- NORFOLK
- CHARLESTON
- LONG BEACH
- SANFRAN BAY:
- MARE ISLAND
- HUNTERS PT.
- PUGET SOUND
- PEARL HARBOR
- SUPSHIP

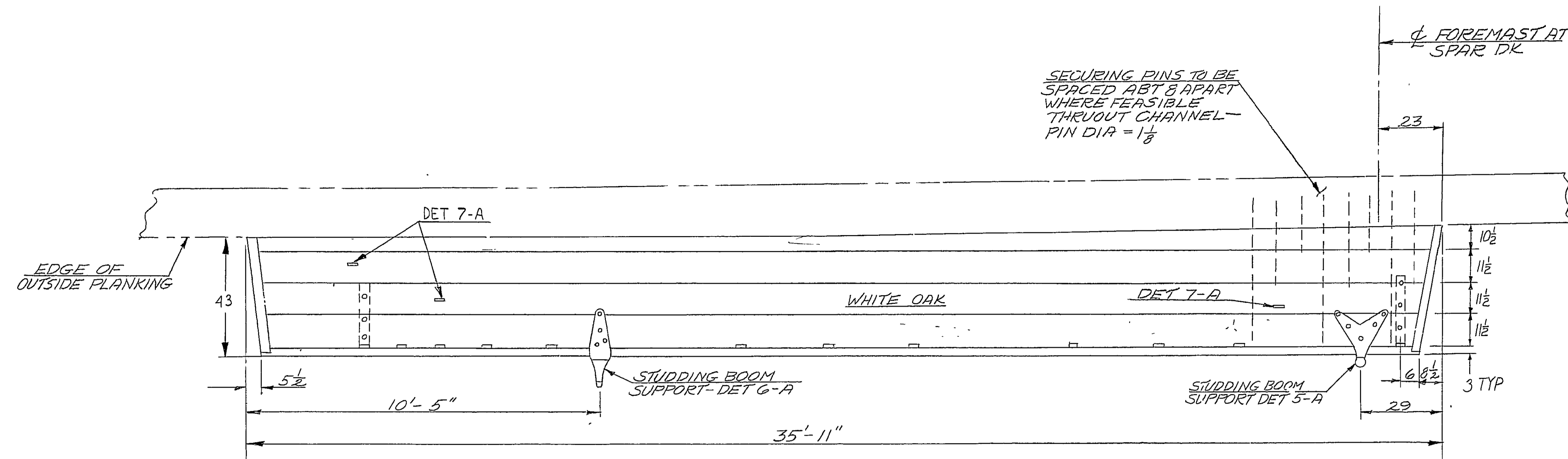
SPCC. MECH
ESG. GLAKES
U. S. S.

CODE	244	1	AP/1	0424
	234	1	1	1

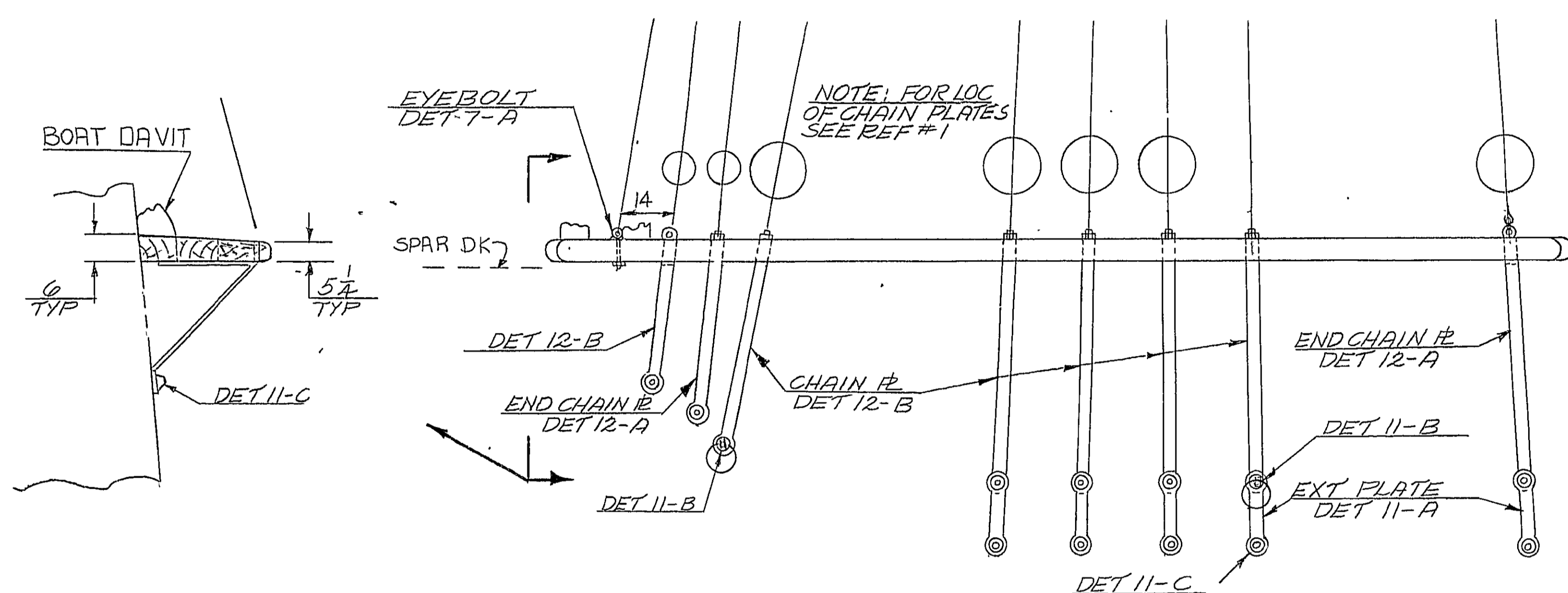
421215 (X1)



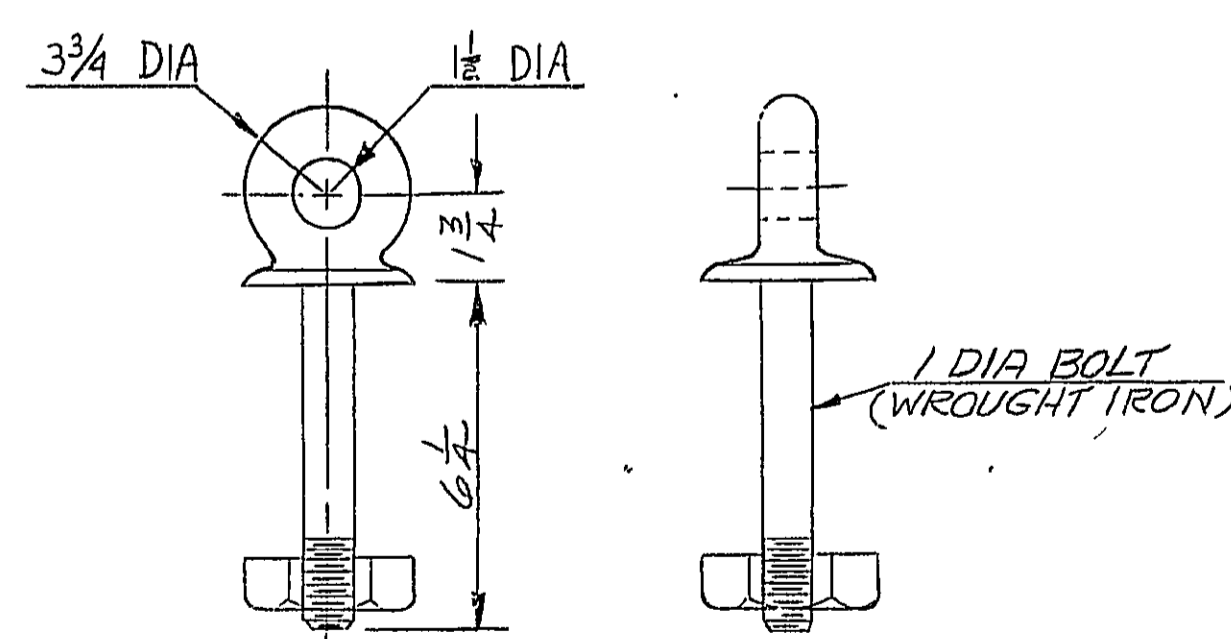
PLAN 7-D
SCALE: 1/2" = 1'-0"



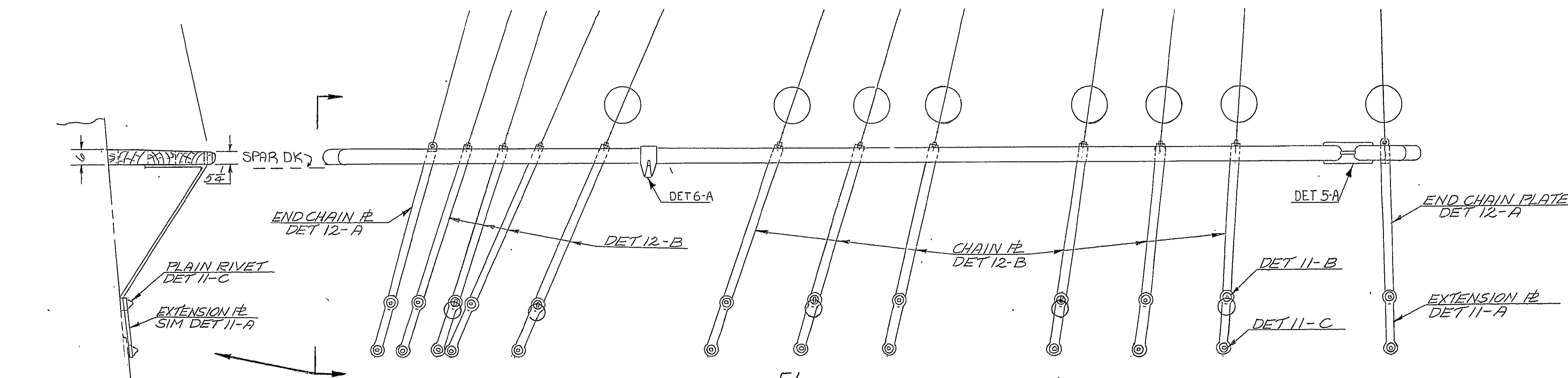
PLAN



DET 7-B
MIZZEN MAST RIGGING CHANNEL
STBD SHOWN - PORT SIM OPP
HAND, EXCEPT AS NOTED
SCALE: 1/2" = 1'-0"

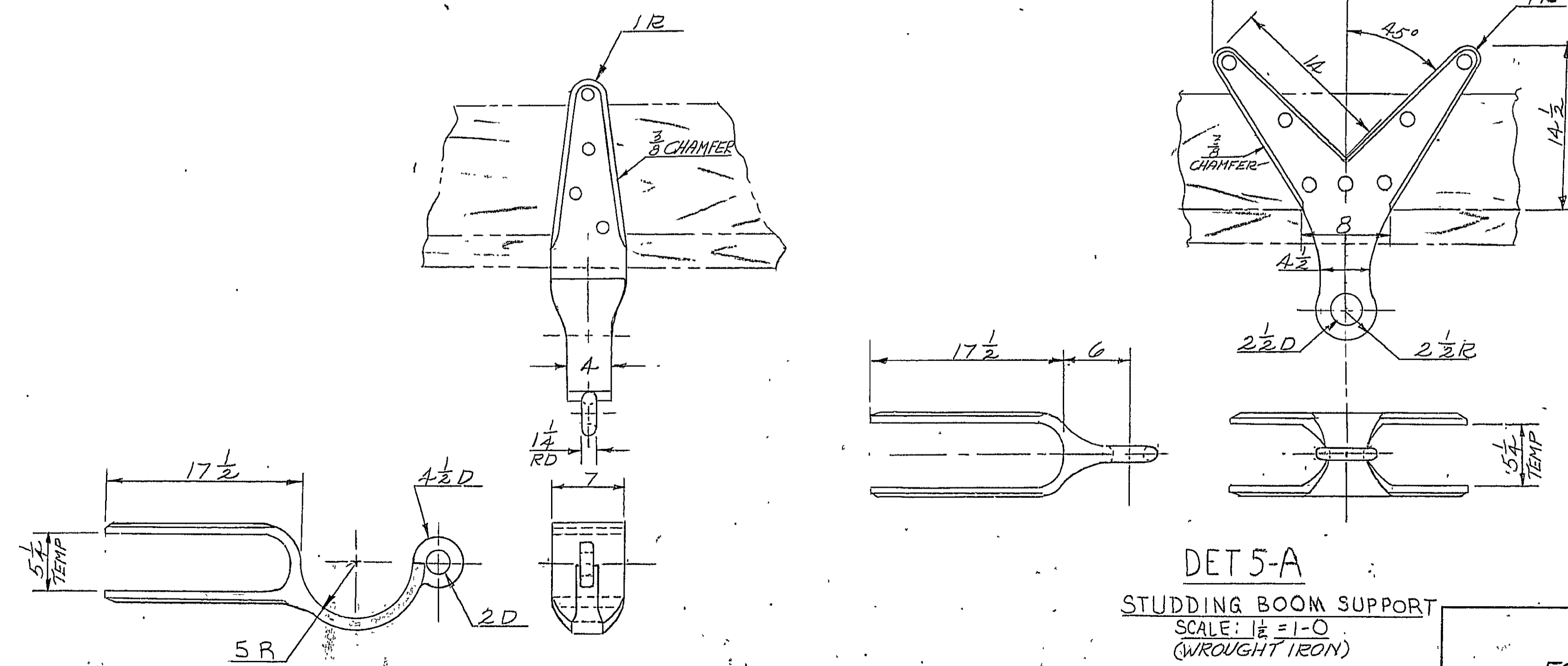


DET 7-A
EYE-BOLT
SCALE: 3/8" = 1'-0"

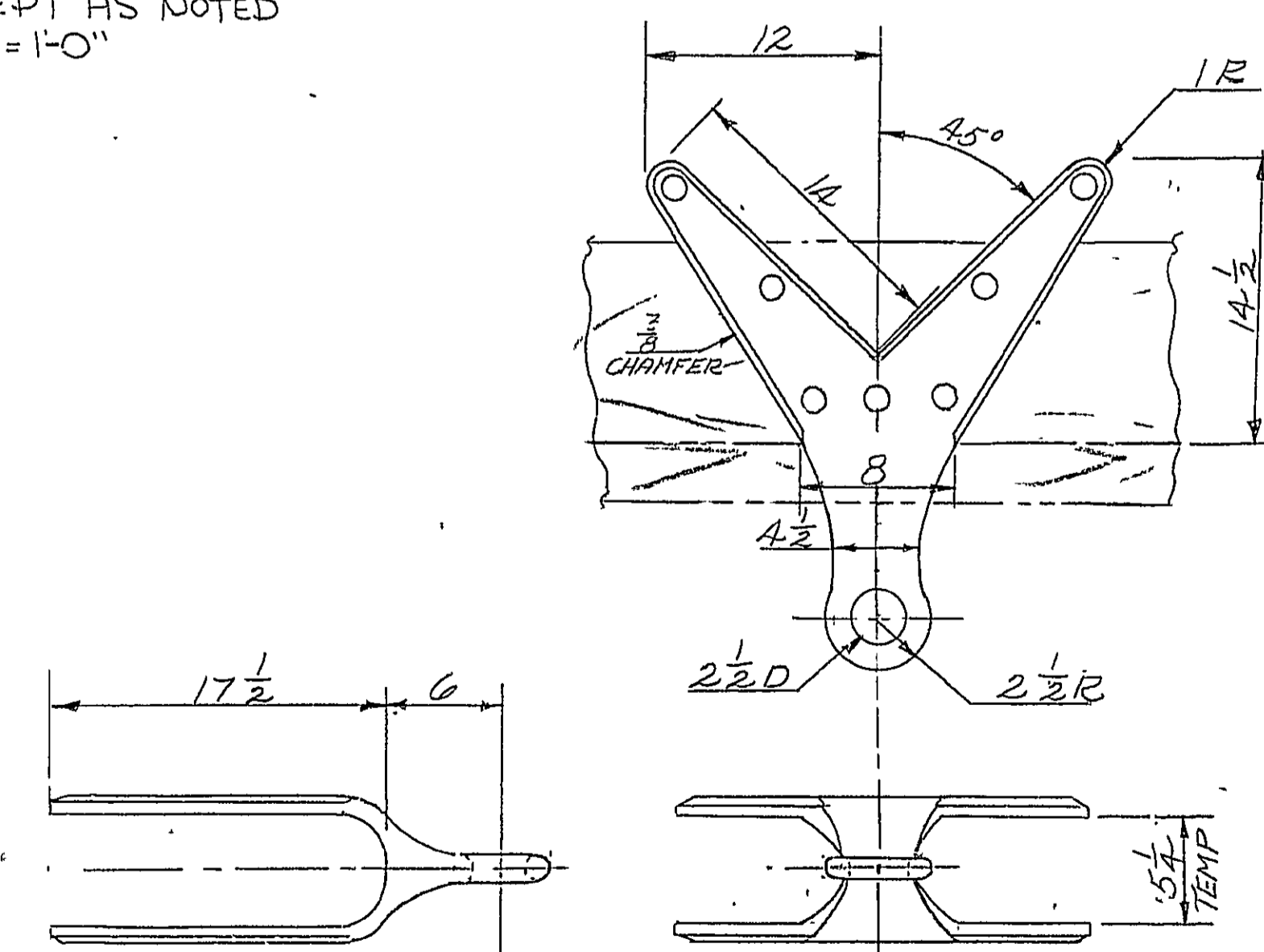


EL
DET 5-B

FOREMAST RIGGING CHANNEL
STBD SHOWN - PORT SIM OPP
HAND, EXCEPT AS NOTED
SCALE: 1/2" = 1'-0"



DET 6-A
STUDDING BOOM SUPPORT
SCALE: 1/2" = 1'-0"
(WROUGHT IRON)

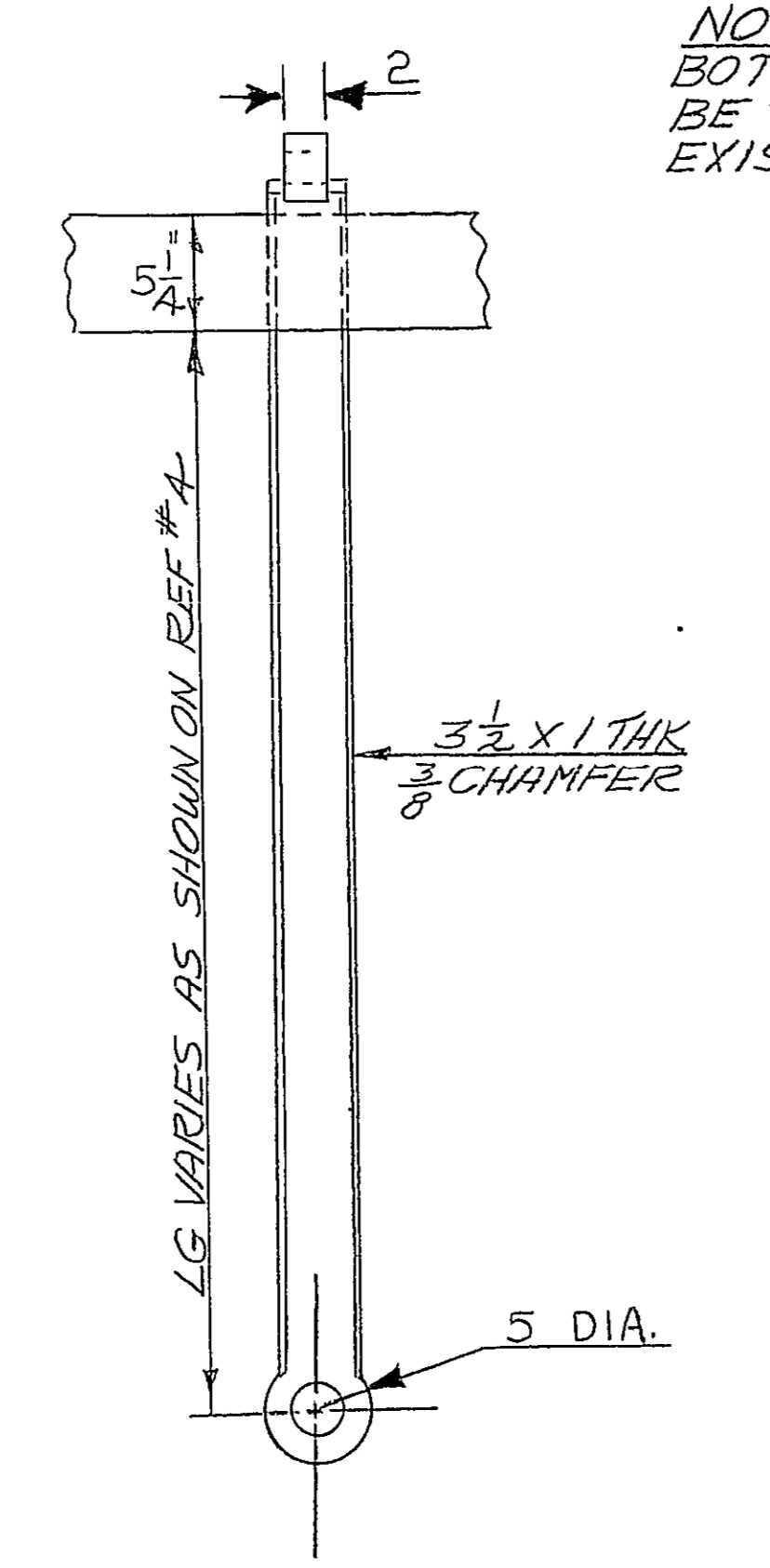


DET 5-A
STUDDING BOOM SUPPORT
SCALE: 1/2" = 1'-0"
(WROUGHT IRON)

FOREMAST & MIZZEN RIGGING CHANNELS			
SIZE	CODE IDENT. NO.	NAVSHIPS DWG. NO.	REV
H	80060/1X21	4513172	A
SCALE: AS NOTED			SHEET 2 OF 3

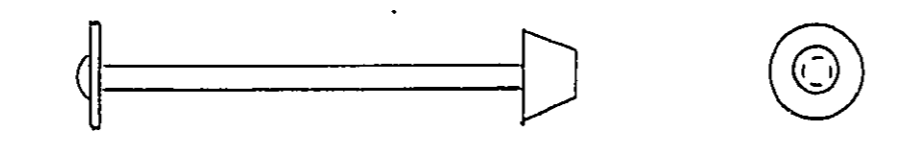
DIA TO SUIT
DEAD-EYE FITTING

DET 12-B
CHAIN PLATE
SCALE: 1/2" = 1'-0"

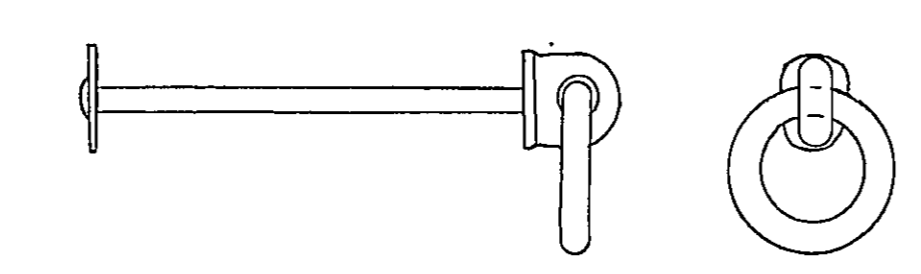


NOTE: DIMS OF BOTH RIVETS TO BE TEMP FROM EXIST RIVETS

DET 11-C
CHAIN PLATE EXTENSION RIVET
WROUGHT IRON

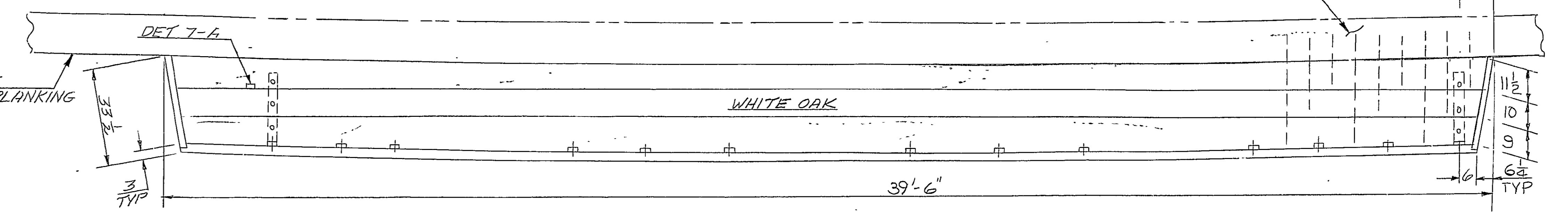


DET 11-B
RIVET WITH RING
SCALE: 1/2" = 1'-0"
WROUGHT IRON



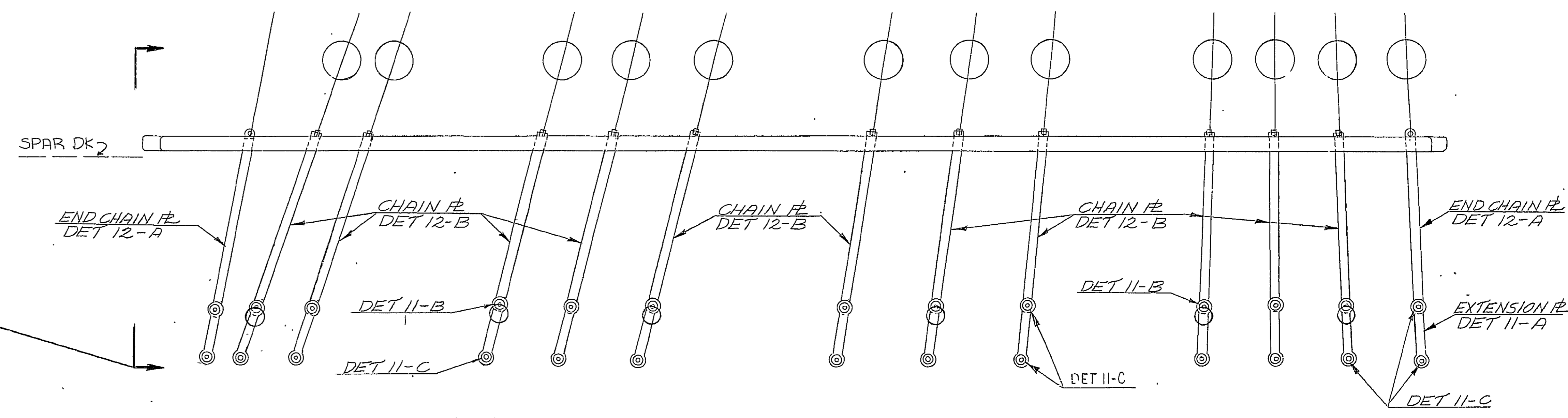
EDGE OF OUTSIDE PLANKING

PLAN 9-B



SECURING PINS TO BE SPACED APT & APART WHERE FEASIBLE THROUGH CHANNEL - PIN DIA = 1/8" (WROUGHT IRON)

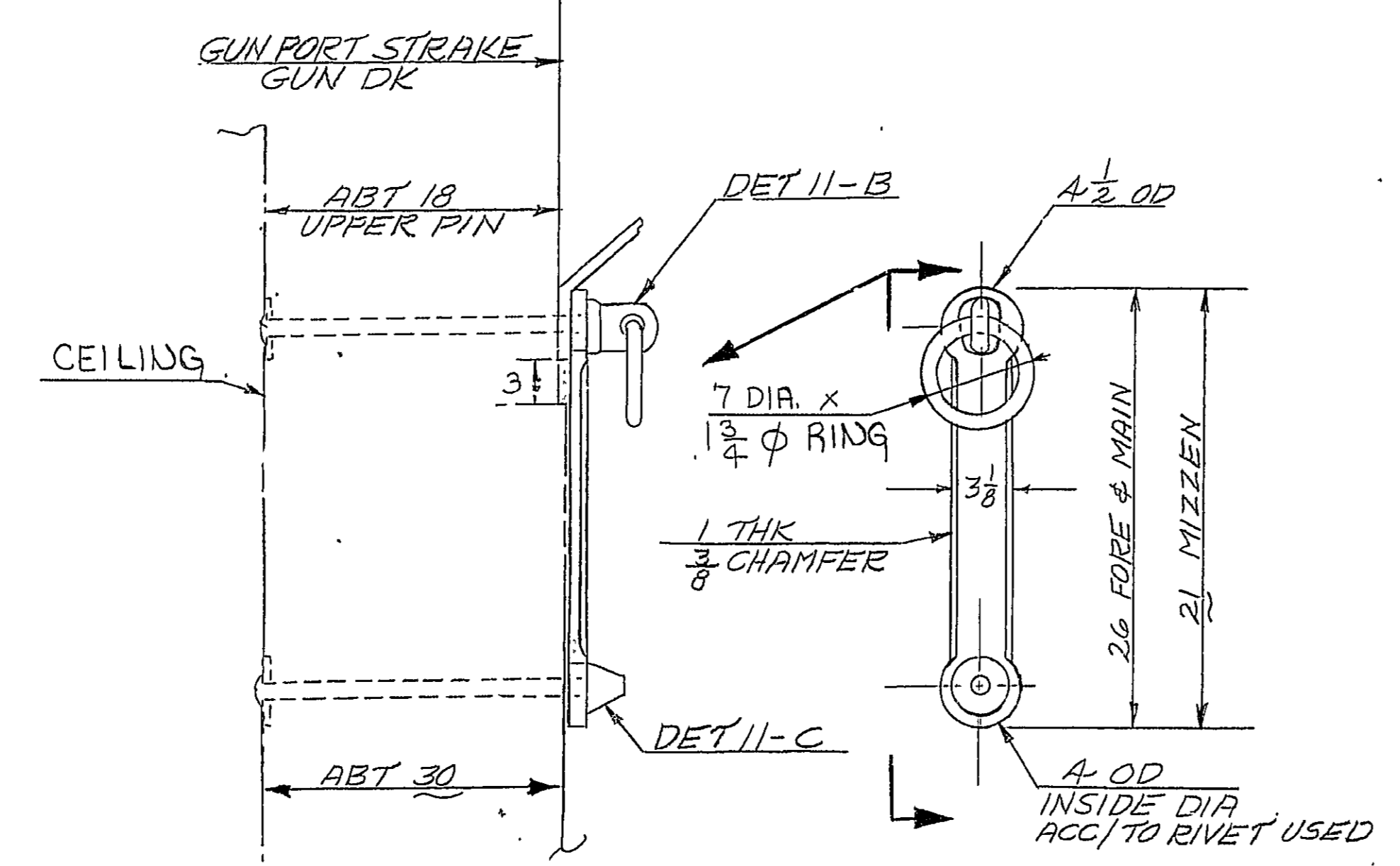
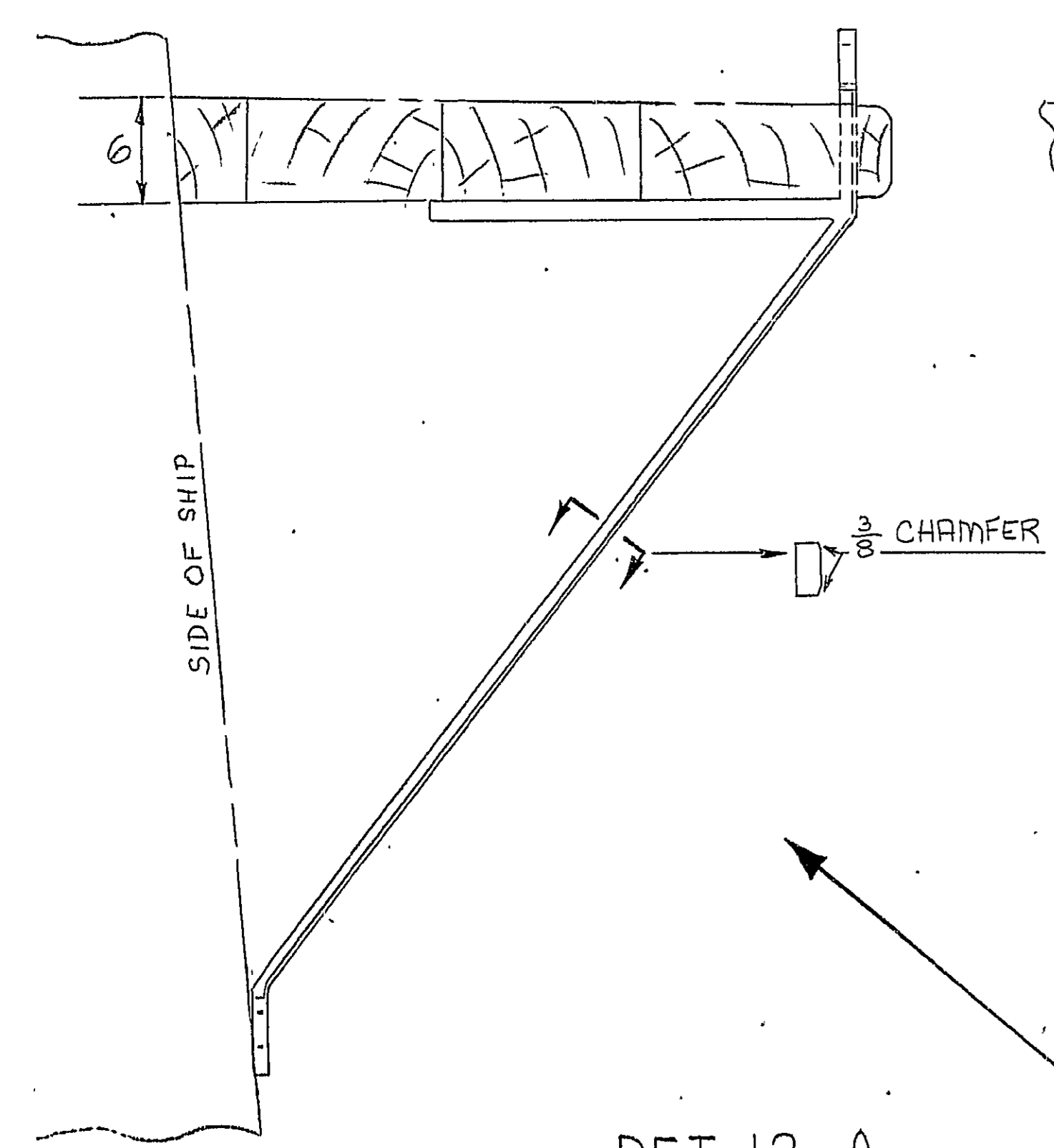
Ø MAINMAST AT SPAR DK



NOTE: FOR LOCATION OF CHAIN PLATES SEE REF #1

DET 9-A
MAIN MAST RIGGING CHANNEL
STBD SHOW - PORT SIM OPP HAND, EXCEPT AS NOTED
1/2" = 1'-0"

DET 12-A
END CHAIN PLATE
SCALE: 1/2" = 1'-0"
(WROUGHT IRON)



DET 11-A
CHAIN PLATE EXTENSION
SCALE: 1/2" = 1'-0"
(WROUGHT IRON)

FORE MAIN & MIZZEN RIGGING CHANNELS			
SIZE	CODE IDENT. NO.	NAVSHIPS DWG. NO.	REV
H	80069/1X21	4513172	A
SCALE: AS NOTED			SHEET 3 OF 3