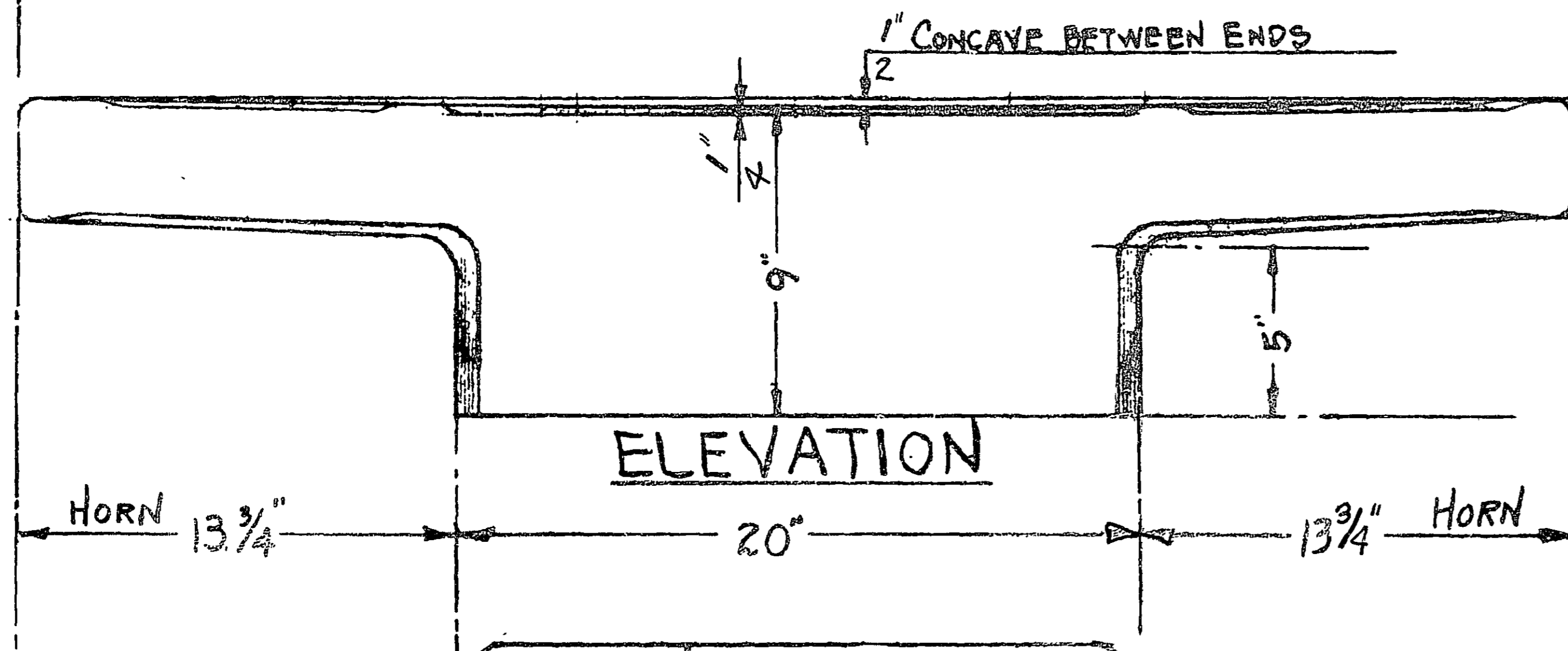
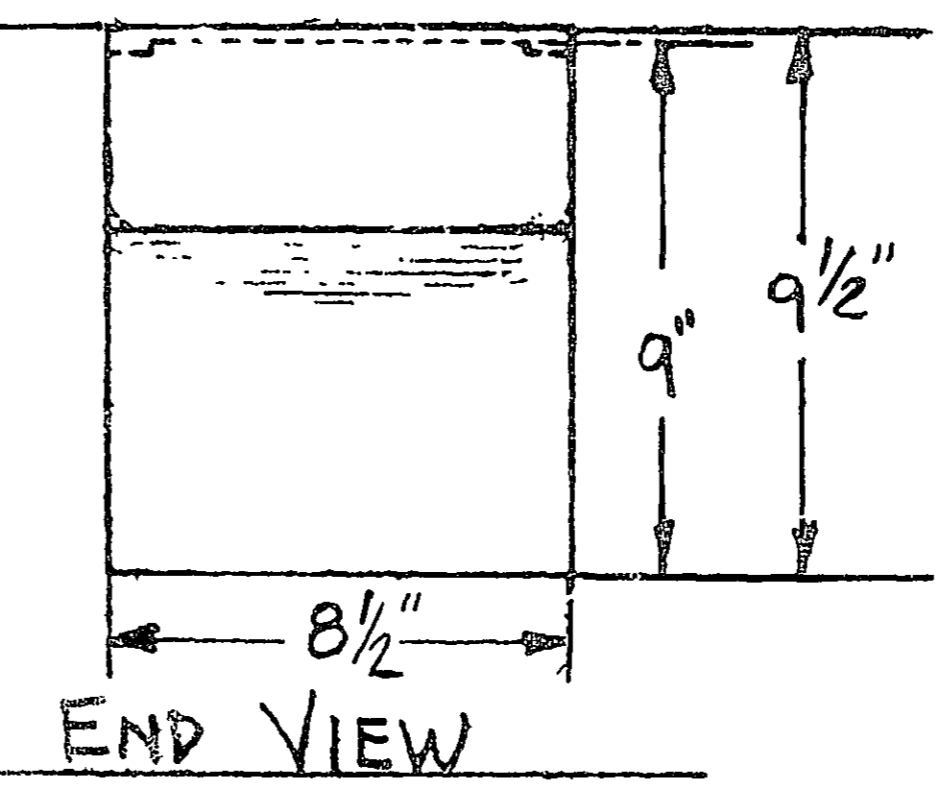


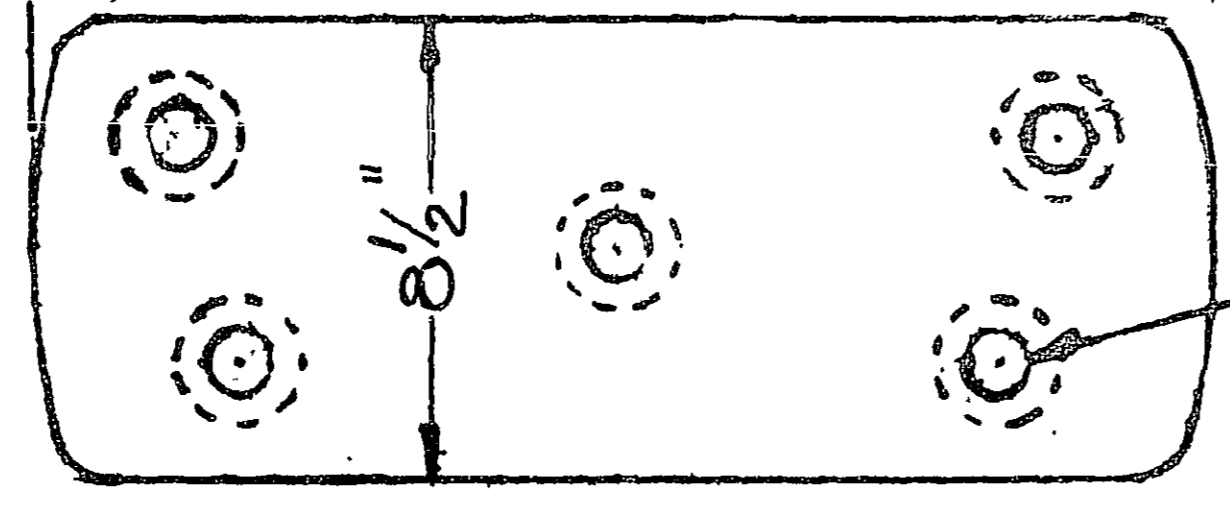
PLAN



ELEVATION



END VIEW



BASE

5-7/8" DIA. W.I. BOLTS  
FASTEN WITH 15/16" DIA. CINCH RINGS

NOTE  
MANUFACTURE ONE SIMILAR 42" LONG.  
LENGTH OF BASE 18" LONG, AND LENGTH  
OF HORNS 12".

LOCATIONS  
ONE BELOW SPAR DECK CENTER LINE  
GUNPORT AT AFT END OF SHIP.  
ONE STBD & PORT ABOARD MIZZEN MAST.  
ONE STBD & PORT BETWEEN 1<sup>ST</sup> & 2<sup>ND</sup> GUNPORT  
ABAFT GANGWAY.  
ONE STBD & PORT FORD OF ANCHOR PORT.  
CLEATS TO HAVE ONE PRIMING COAT & 2 COATS WHITE

ACTUAL HEIGHTS ABOVE  
DECK AS DIRECTED BY  
LIEUT. J.A. LORD.

MATERIAL TO BE LIVE OAK  
SIX REQUIRED THUS  
SCALE: 3" = 1 FT.  
SEE NOTE

U.S. FRIGATE CONSTITUTION  
SPAR DECK BULWARKS CLEATS  
OF LIVE OAK MATERIAL

APPROVED - MAR. 1930  
*John A. Lord*  
LIEUT. (C.C.) U.S.N.  
SUPT. OF RESTORATION

DRAWN BY: *McMurry*

No 28433