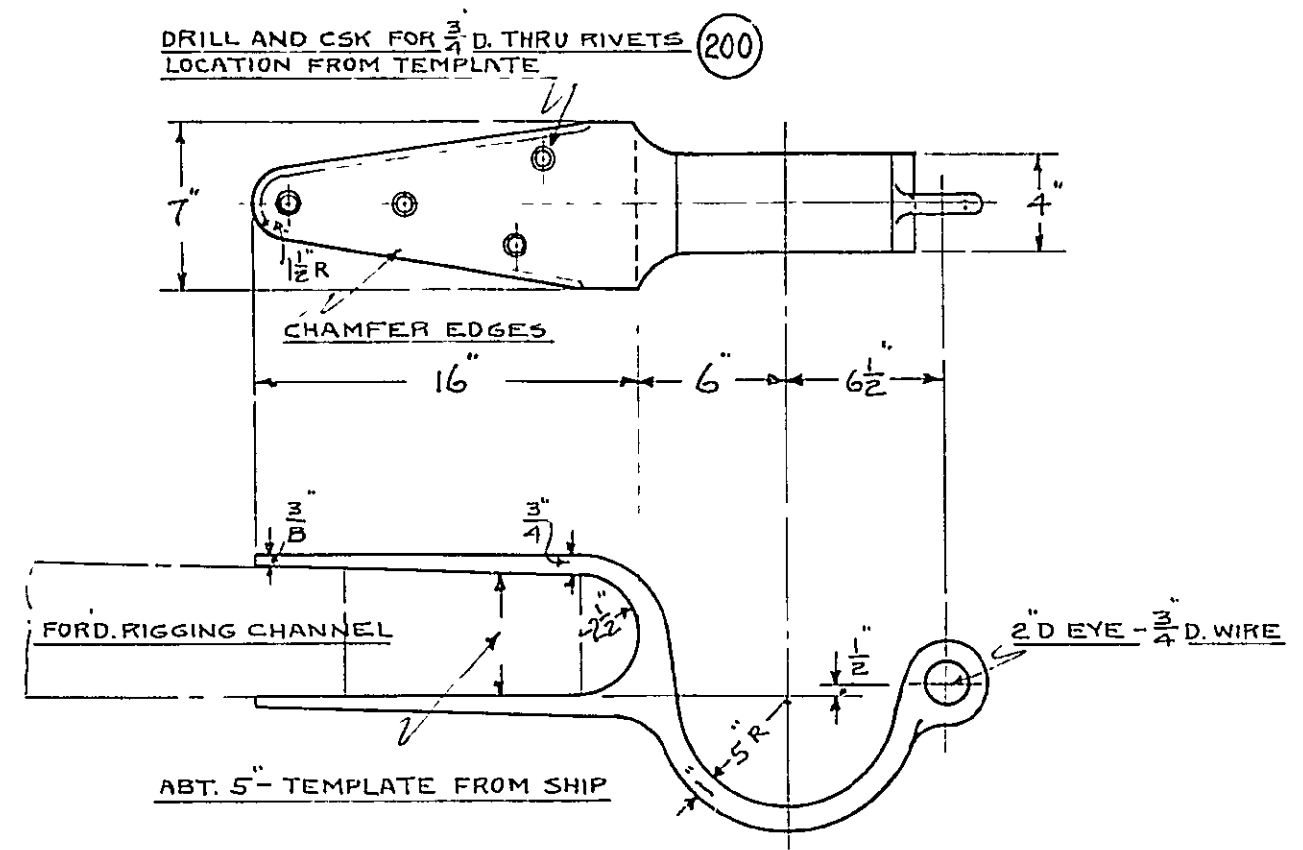
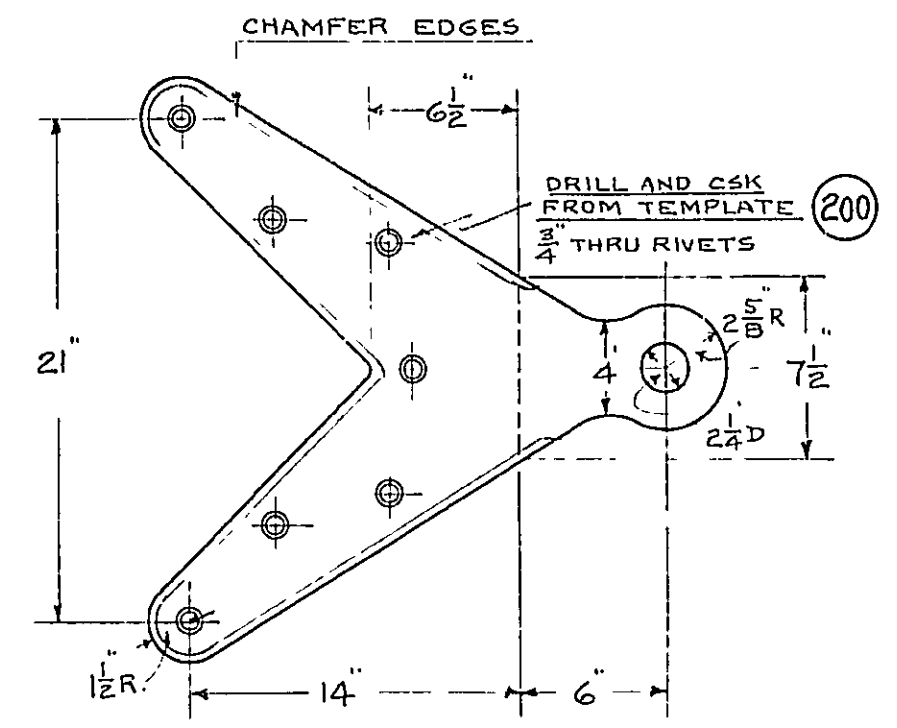
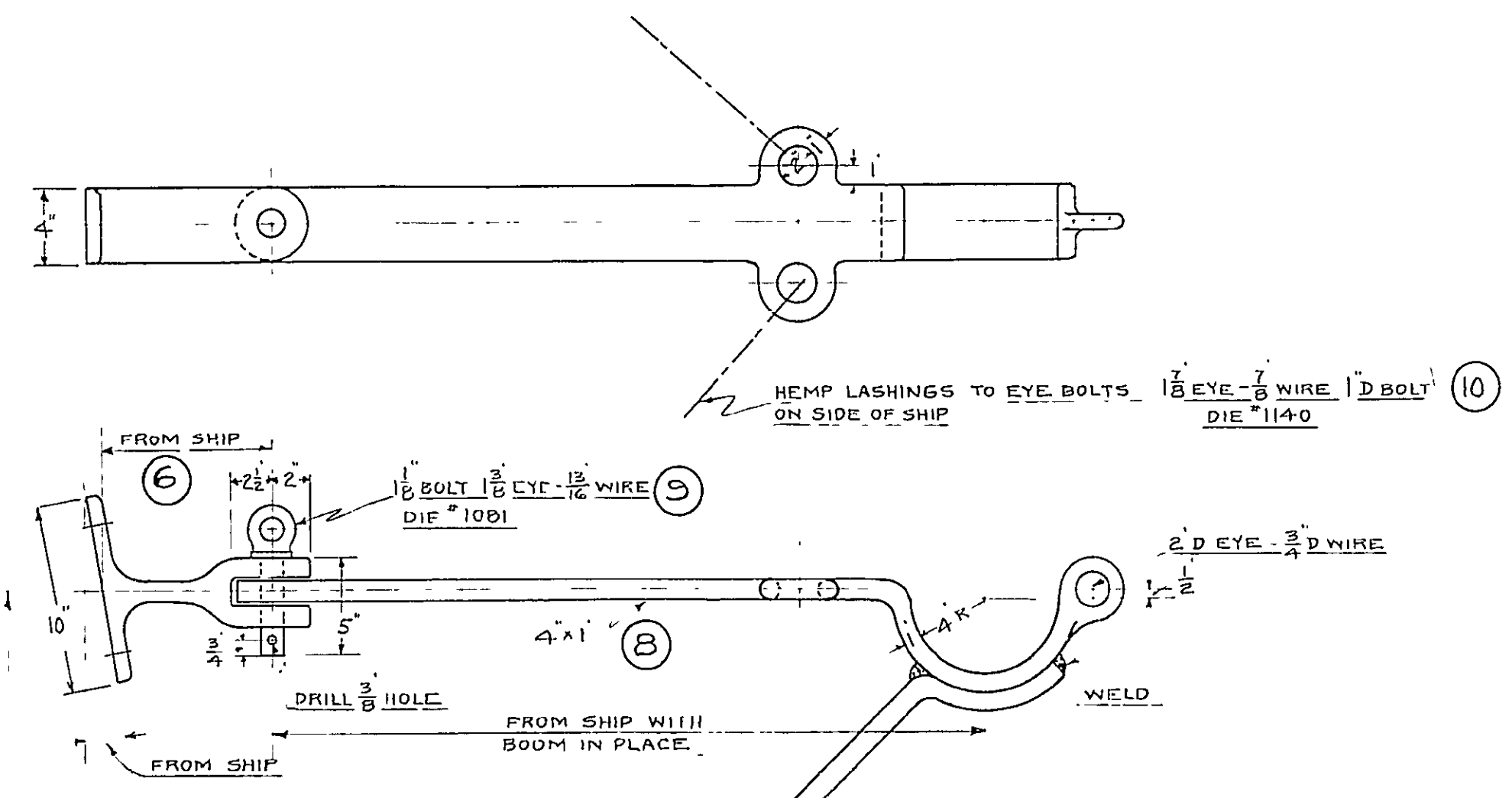


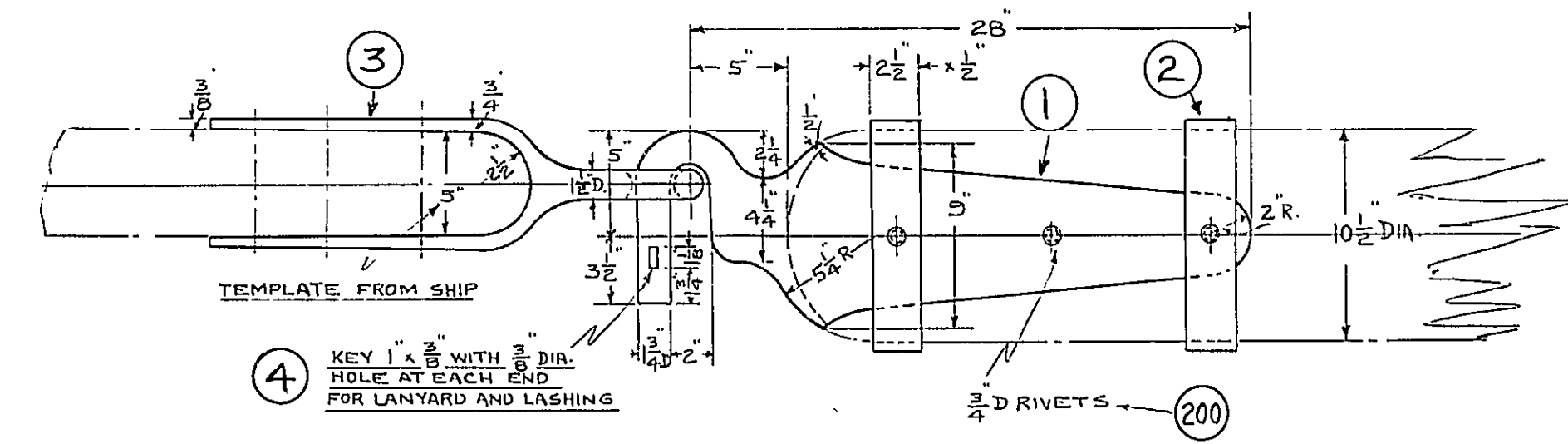
SCHEDULE OF MATERIAL FOR 2 BOOMS				
NO	AMT	DESCRIPTION	MATERIAL	REMARKS
1	2	GOOSENECK	STEEL GALV.	
2	4	" BANDS	"	
3	2	" SOCKET	"	
4	2	" KEY	"	
5	2	BOOM CRUTCH - MIDDLE	"	
6	2	UPPER PAD	"	
7	2	LOWER PAD	"	
8	2	BOOM CRUTCH - END	"	
9	4	EYE PIN - 5" LONG	"	DIE # 1091
10	4	EYE BOLT - 8" LONG	"	DIE # 1140
200	22 ^{1/2}	3/4" D RIVET ROD	STEEL GALV.	
201	8	1/8" D LAG SCREWS	"	6" LONG
202	6	SISTER HOOKS 7/8"	"	GALV WITH ROUND THIMBLE FOR 3" ROPE
203	2	1 1/4" HOOK - SIDE	"	GALV WITH ROUND THIMBLE - 5" ROPE
204	2	HIMBLE - ROUND FOR 5" ROPE	"	
205	12	" " " 4 1/2"	"	
206	16	" " " 3"	"	
207				
208	2	BOOMS	FIR	
209	8	STOP CLEATS	W. OAK	
210	24	SCREWS - # 2-3 1/2 L	BRASS	
211	22	LADDER RUNGS	W OAK	ON HAND
212	200	5" CIR HEMP ROPE		
213	60	4 1/2" " "		
214	20	3 1/2" " "		
215	720	3" " "		
216	4	8" SINGLE BLOCKS - METALINE RINGED	WOOD	SCORED FOR ROPE STRAP
217	6	1 1/4" HOOK - SINGLE SIDE	STEEL GALV.	
218	2	BULLSEYE	LIGNUMVITAE	
219	2	13 BLOCKS - SINGLE	WOOD	C.I. SHEAVES - METALINE BUSHED DIA. 2-1/8"



MIDDLE-BOOM CRUTCH
LOCATION - APT. 24 FT. FROM GOOSENECK
SCALE 1/2" = 1 FT.



END-BOOM CRUTCH
LOCATION - APT. 2 FT. FROM END OF BOOM
SCALE 1/2" = 1 FT.

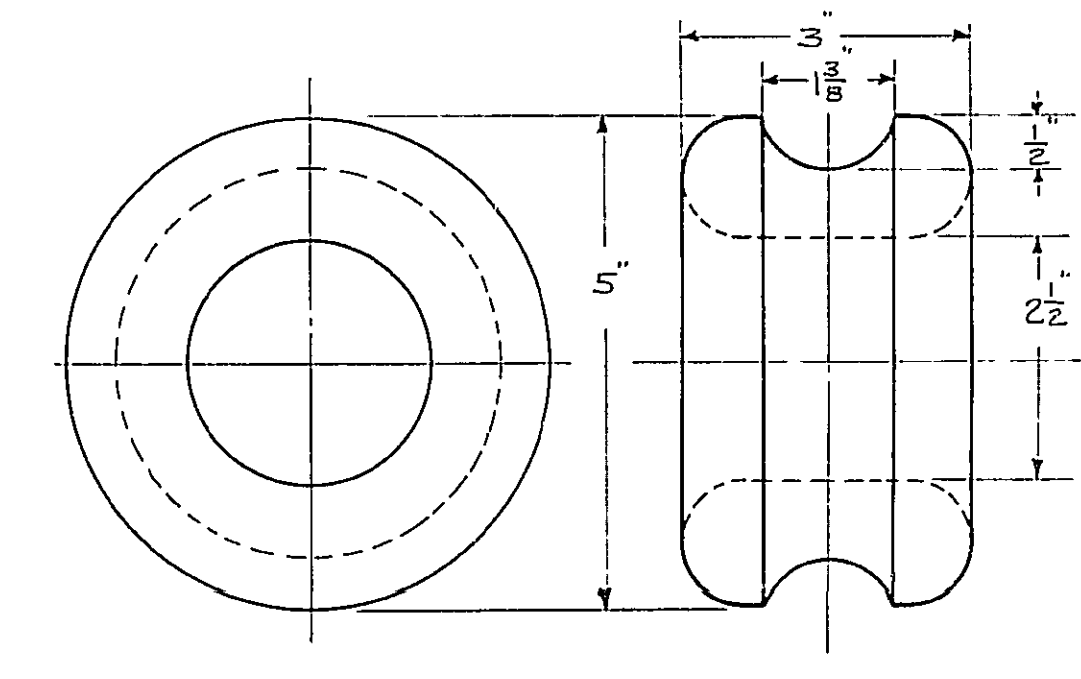


GOOSE-NECK AND SOCKET
SCALE 1/2" = 1 FT.

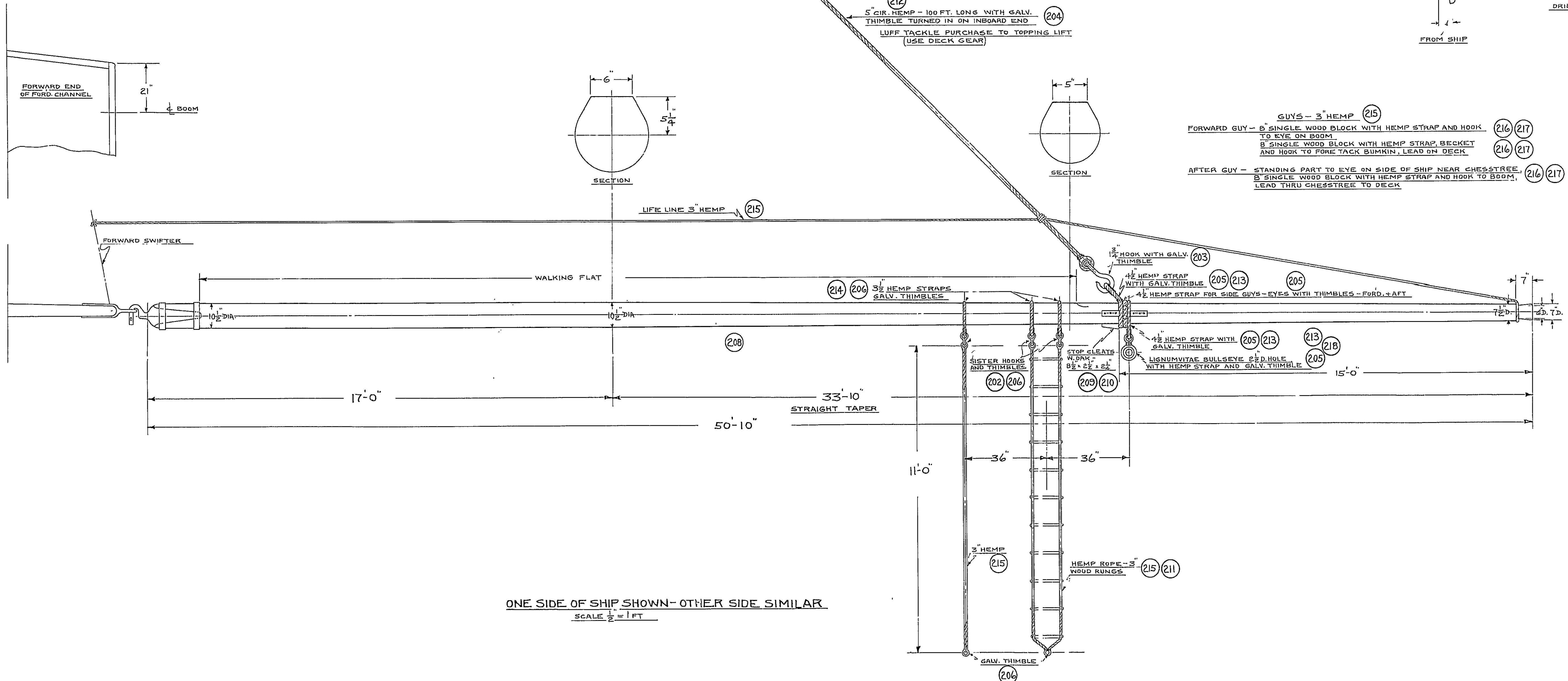
2-13 WOOD BLOCKS WITH CAST IRON SHEAVES - METALINE BUSHED - (8 1/2 x 2 x 1 1/8) STRAPPED WITH 4 1/2 CIR HEMP WITH GALV. THIMBLES. BLOCK SEIZED TO THE SECOND SHROUD OF THE FOREMAST HALF WAY BETWEEN THE PUTTOK STAVE AND SEIZING OF THE EYE.

5" CIR. HEMP - 100 FT. LONG WITH GALV. THIMBLE TURNED IN ON INBOARD END. LUFF TACKLE PURCHASE TO TOPPING LIFT (USE DECK GEAR)

GUYS - 3" HEMP
FORWARD GUY - 8" SINGLE WOOD BLOCK WITH HEMP STRAP AND HOOK TO EYE ON BOOM. 8" SINGLE WOOD BLOCK WITH HEMP STRAP, BECKET AND HOOK TO FORE TACK BUMMIN, LEAD ON DECK.
AFTER GUY - STANDING PART TO EYE ON SIDE OF SHIP NEAR CHESSTREE. 8" SINGLE WOOD BLOCK WITH HEMP STRAP AND HOOK TO BOOM, LEAD THRU CHESSTREE TO DECK.



BULLSEYE
SCALE 6" = 1 FT.



ONE SIDE OF SHIP SHOWN - OTHER SIDE SIMILAR
SCALE 1/2" = 1 FT.

RESTORATION 1927
U.S. FRIGATE CONSTITUTION
BOAT BOOM
(LOWER STUDDINGSAIL BOOM)
NAVY YARD BOSTON FEBRUARY 14, 1931
SCALES INDICATED

APPROVED FOR MANAGER
John A. Ross
LIEUT. (E.C.) U.S.N.
SUPT. OF RESTORATION