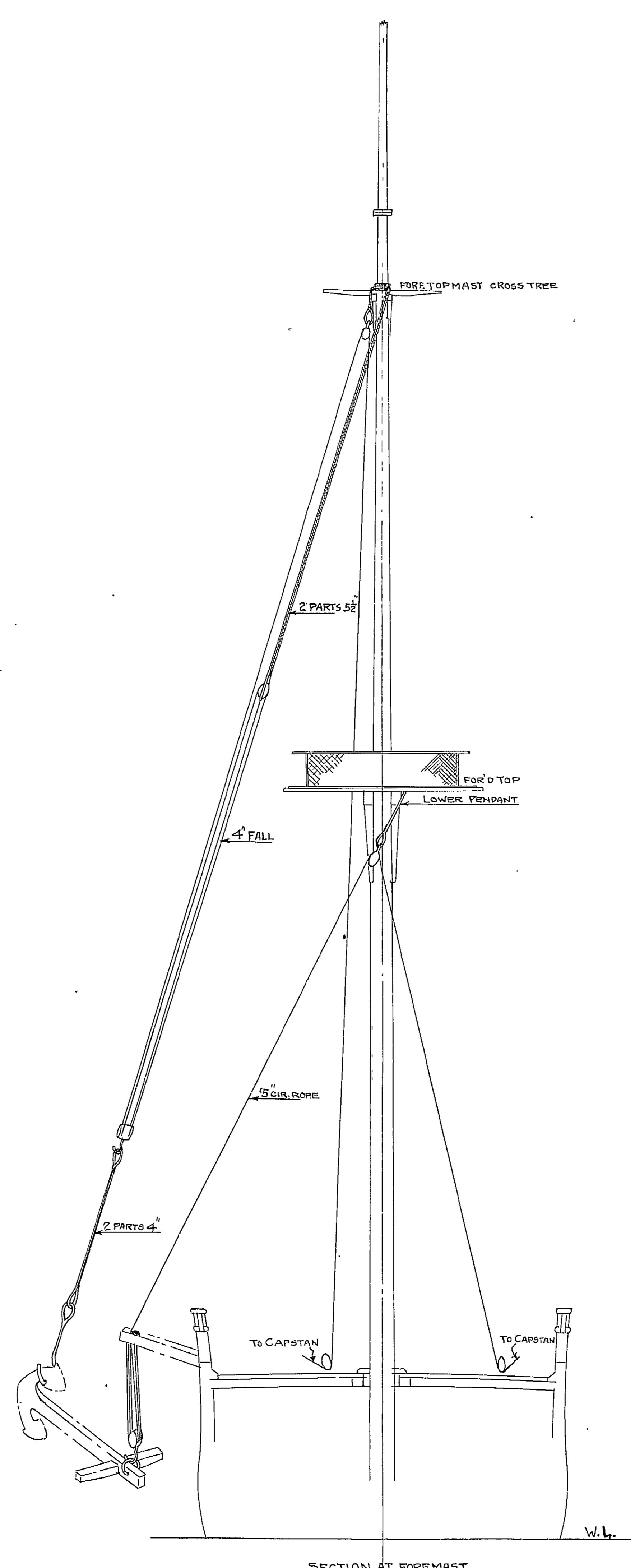
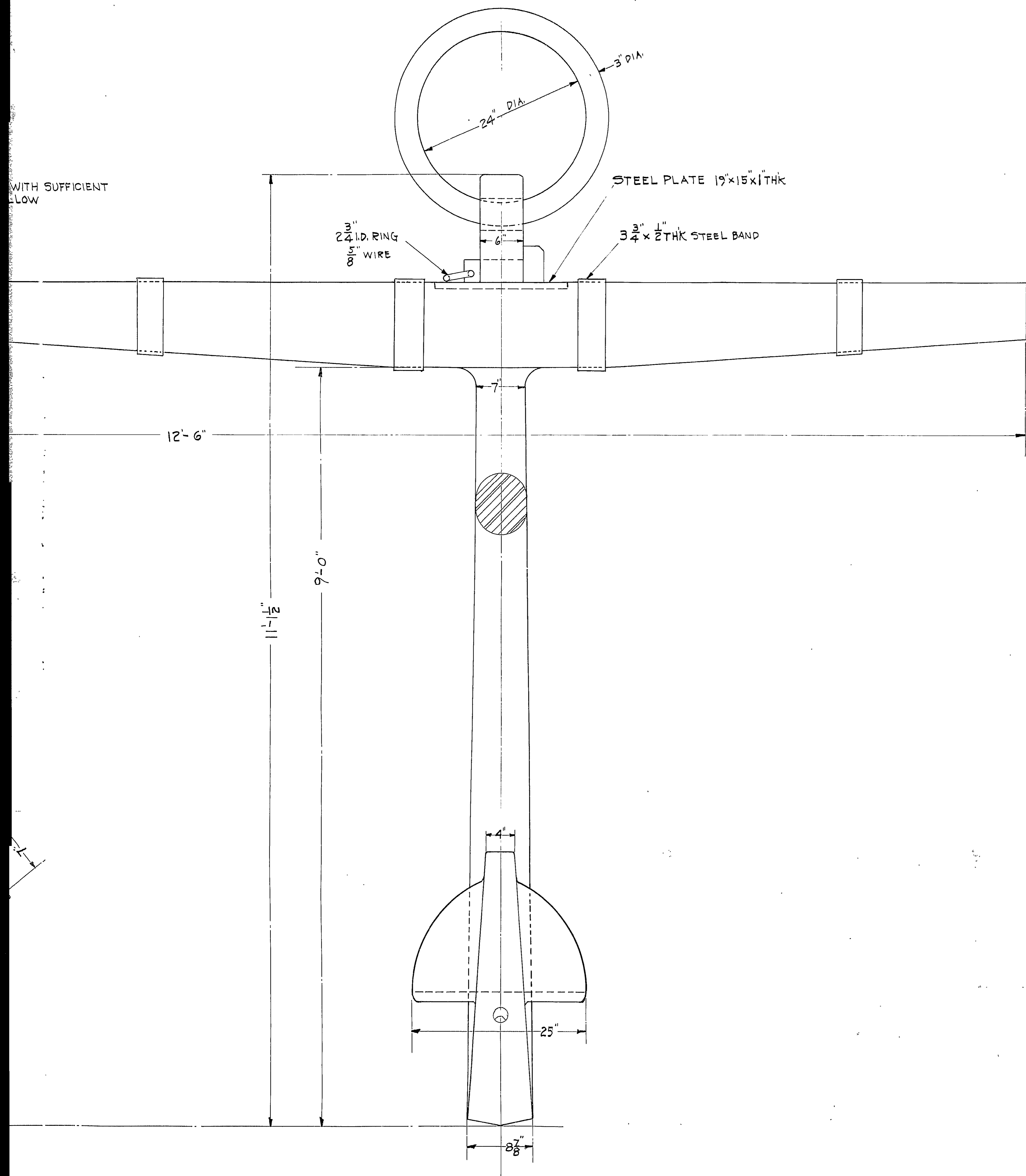


SKE



SECTION AT FOREMAST
 SKETCH SHOWING METHOD OF FISHING ANCHOR

NOTE:
 THE TWO BOWER ANCHORS INSTALLED DURING THE 1927-1931 RESTORATION WERE REMOVED FROM THE SHIP PRIOR TO DISMANTLING - 1926
 W.T. - 5300# EACH.

TAKEN FROM WORK
 RESTORATION - 1927 - 1931
 U.S. FRIGATE CONSTITUTION
 BOWER ANCHORS
 AND
 ANCHOR HANDLING
 NAVY YARD - BOSTON

SCALE: 1/2" = 3'-0" H.P.
 DRAWN BY: J.C.G.
 TRACED BY: M.C.
 SUPERVISOR: C.S.A.
 CHIEF DRAFTSMAN: F.E.E.
 APPROVED OCT. 1 - 1931
 FOR THE MANAGER